

**Product Name: Thioredoxin Reductase 1 Rabbit
Monoclonal Antibody
Catalog #: AMRe02732**

Summary

Production Name	Thioredoxin Reductase 1 Rabbit Monoclonal Antibody
Description	Rabbit Monoclonal antibody
Host	Rabbit
Application	WB,IHC-F,IHC-P,ICC/IF,IP
Reactivity	Human,Mouse

Performance

Conjugation	Unconjugated
Modification	Unmodified
Isotype	IgG
Clonality	Monoclonal
Form	Liquid
Storage	Store at 4°C short term. Aliquot and store at -20°C long term. Avoid freeze/thaw cycles.
Buffer	50mM Tris-Glycine(pH 7.4), 0.15M NaCl, 40% Glycerol, 0.01% Sodium azide and 0.05% BSA
Purification	Affinity Purification

Immunogen

Gene Name	TXNRD1
Alternative Names	TR; TR1; TXNR; TRXR1; GRIM-12
Gene ID	7296
SwissProt ID	Q16881.

Application

Dilution Ratio	WB: 1:500-1:1000 IHC: 1:50-1:100 IF: 1:50-1:200 IP: 1:20
Molecular Weight	Calculated MW: 71 kDa; Observed MW: 55 kDa

**Product Name: Thioredoxin Reductase 1 Rabbit
Monoclonal Antibody
Catalog #: AMRe02732**



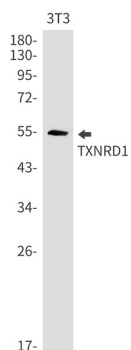
Background

Isoform 1 may possess glutaredoxin activity as well as thioredoxin reductase activity and induces actin and tubulin polymerization, leading to formation of cell membrane protrusions. Isoform 4 enhances the transcriptional activity of estrogen receptors alpha and beta while isoform 5 enhances the transcriptional activity of the beta receptor only. Isoform 5 also mediates cell death induced by a combination of interferon-beta and retinoic acid.

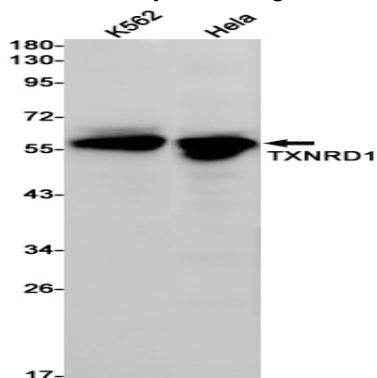
Research Area

Signal Transduction

Image Data

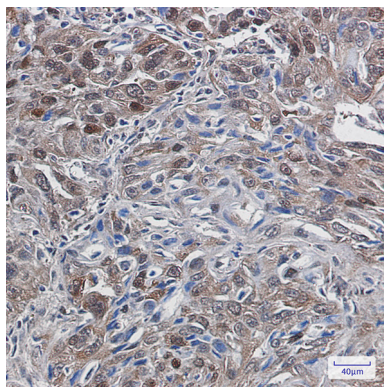


Western blot analysis of TXNRD1 in 3T3 lysates using Thioredoxin Reductase 1 antibody.

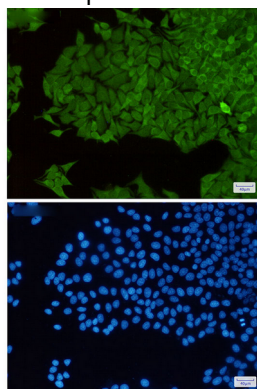


Western blot analysis of TXNRD1 in K562, HeLa lysates using TXNRD1 antibody.

**Product Name: Thioredoxin Reductase 1 Rabbit
Monoclonal Antibody
Catalog #: AMRe02732**



Immunohistochemistry analysis of paraffin-embedded Human lung cancer using TXNRD1 antibody. High-pressure and temperature Sodium Citrate pH 6.0 was used for antigen retrieval.



Immunocytochemistry analysis of TXNRD1(green) in HeLa using TXNRD1 antibody, and DAPI(blue).

Note

For research use only.