

**Product Name: Topoisomerase I Rabbit Monoclonal Antibody**  
**Catalog #: AMRe02703**

---

## Summary

<b>Production Name</b>	Topoisomerase I Rabbit Monoclonal Antibody
<b>Description</b>	Rabbit Monoclonal antibody
<b>Host</b>	Rabbit
<b>Application</b>	WB,IHC-F,IHC-P,ICC/IF
<b>Reactivity</b>	Human,Mouse,Rat

## Performance

<b>Conjugation</b>	Unconjugated
<b>Modification</b>	Unmodified
<b>Isotype</b>	IgG
<b>Clonality</b>	Monoclonal
<b>Form</b>	Liquid
<b>Storage</b>	Store at 4°C short term. Aliquot and store at -20°C long term. Avoid freeze/thaw cycles.
<b>Buffer</b>	50mM Tris-Glycine(pH 7.4), 0.15M NaCl, 40% Glycerol, 0.01% Sodium azide and 0.05% BSA
<b>Purification</b>	Affinity Purification

## Immunogen

<b>Gene Name</b>	TOP1
<b>Alternative Names</b>	TOP1; DNA topoisomerase 1; DNA topoisomerase I
<b>Gene ID</b>	7150
<b>SwissProt ID</b>	P11387.

## Application

<b>Dilution Ratio</b>	WB: 1:500-1:1000 IHC: 1:50-1:100 IF: 1:50-1:200
<b>Molecular Weight</b>	Calculated MW: 91 kDa; Observed MW: 91 kDa

**Product Name: Topoisomerase I Rabbit Monoclonal Antibody**  
**Catalog #: AMRe02703**



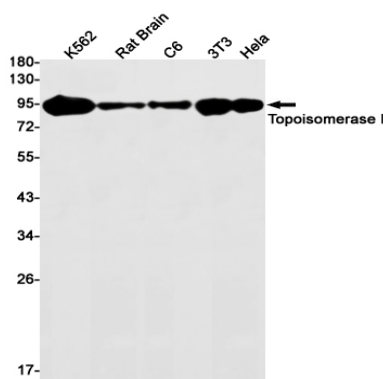
## Background

Releases the supercoiling and torsional tension of DNA introduced during the DNA replication and transcription by transiently cleaving and rejoining one strand of the DNA duplex. Introduces a single-strand break via transesterification at a target site in duplex DNA. The scissile phosphodiester is attacked by the catalytic tyrosine of the enzyme, resulting in the formation of a DNA-(3'-phosphotyrosyl)-enzyme intermediate and the expulsion of a 5'-OH DNA strand.

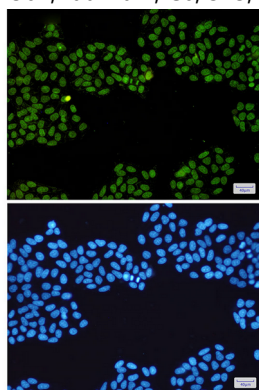
## Research Area

Epigenetics and Nuclear Signaling

## Image Data



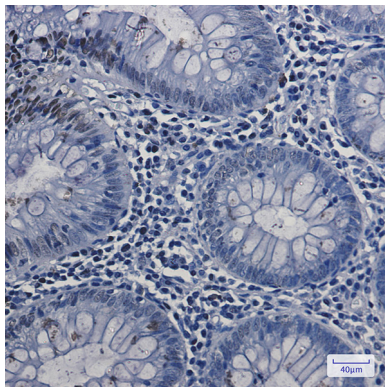
Western blot analysis of Topoisomerase I in K562, rat Brain, C6, 3T3, Hela lysates using Topoisomerase I antibody.



Immunocytochemistry analysis of Topoisomerase I(green) in Hela using Topoisomerase I antibody, and DAPI(blue)

**Product Name: Topoisomerase I Rabbit Monoclonal Antibody**  
**Catalog #: AMRe02703**

---



Immunohistochemistry analysis of paraffin-embedded Human colon cancer using Topoisomerase I antibody. High-pressure and temperature Sodium Citrate pH 6.0 was used for antigen retrieval.

### **Note**

For research use only.