

**Product Name: Transmembrane Protein 43 Rabbit  
Monoclonal antibody  
Catalog #: AMRe02698**

---

## Summary

<b>Production Name</b>	Transmembrane Protein 43 Rabbit Monoclonal antibody
<b>Description</b>	Recombinant Rabbit Monoclonal antibody
<b>Host</b>	Rabbit
<b>Application</b>	WB,IHC-P
<b>Reactivity</b>	Human,Rat

## Performance

<b>Conjugation</b>	Unconjugated
<b>Modification</b>	Unmodified
<b>Isotype</b>	IgG
<b>Clonality</b>	Monoclonal Antibody
<b>Form</b>	Liquid
<b>Storage</b>	Store at 4°C short term. Aliquot and store at -20°C long term. Avoid freeze/thaw cycles.
<b>Buffer</b>	50mM Tris-Glycine(pH 7.4), 0.15M NaCl, 40% Glycerol, 0.01% Sodium azide and 0.05% BSA
<b>Purification</b>	Affinity Purified

## Immunogen

<b>Gene Name</b>	TMEM43
<b>Alternative Names</b>	LUMA; ARVC5; ARVD5; EDMD7
<b>Gene ID</b>	79188
<b>SwissProt ID</b>	Q9BTV4.

## Application

<b>Dilution Ratio</b>	WB: 1:500-1:1000 IHC: 1:50-1:100
<b>Molecular Weight</b>	Calculated MW: 45 kDa; Observed MW: 45 kDa

**Product Name: Transmembrane Protein 43 Rabbit  
Monoclonal antibody  
Catalog #: AMRe02698**

---



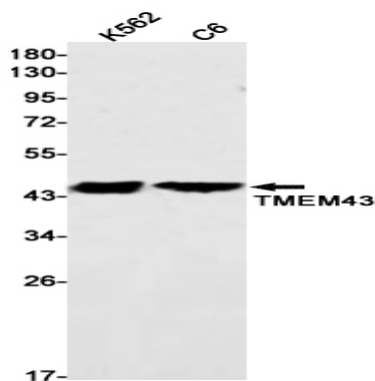
## Background

May have an important role in maintaining nuclear envelope structure by organizing protein complexes at the inner nuclear membrane. Required for retaining emerin at the inner nuclear membrane .

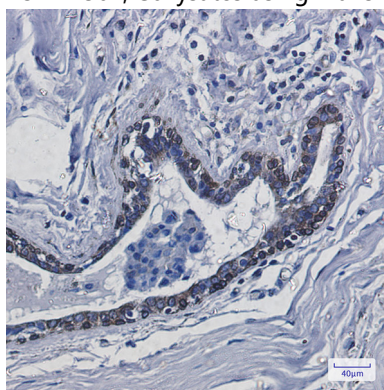
## Research Area

Tags & Cell Markers

## Image Data



Western blot analysis of TMEM43 in K562, C6 lysates using Transmembrane Protein 43 antibody.



Immunohistochemistry analysis of paraffin-embedded Human breast cancer using TMEM43 antibody. High-pressure and temperature Sodium Citrate pH 6.0 was used for antigen retrieval.

## Note

For research use only.