

**Product Name: Thymidine Kinase Rabbit Monoclonal Antibody**  
**Catalog #: AMRe02688**

---



## Summary

<b>Production Name</b>	Thymidine Kinase Rabbit Monoclonal Antibody
<b>Description</b>	Rabbit Monoclonal antibody
<b>Host</b>	Rabbit
<b>Application</b>	WB,IP
<b>Reactivity</b>	Human

## Performance

<b>Conjugation</b>	Unconjugated
<b>Modification</b>	Unmodified
<b>Isotype</b>	IgG
<b>Clonality</b>	Monoclonal
<b>Form</b>	Liquid
<b>Storage</b>	Store at 4°C short term. Aliquot and store at -20°C long term. Avoid freeze/thaw cycles.
<b>Buffer</b>	50mM Tris-Glycine(pH 7.4), 0.15M NaCl, 40% Glycerol, 0.01% Sodium azide and 0.05% BSA
<b>Purification</b>	Affinity Purification

## Immunogen

<b>Gene Name</b>	TK1
<b>Alternative Names</b>	EC 2.7.1.21; KITH; TK-1; TK1; Thymidine kinase 1; cytosolic
<b>Gene ID</b>	7083
<b>SwissProt ID</b>	P04183.

## Application

<b>Dilution Ratio</b>	WB: 1:500-1:1000 IP: 1:20
<b>Molecular Weight</b>	Calculated MW: 25 kDa; Observed MW: 25 kDa

## Background

---

**Product Name: Thymidine Kinase Rabbit Monoclonal Antibody**  
**Catalog #: AMRe02688**

---

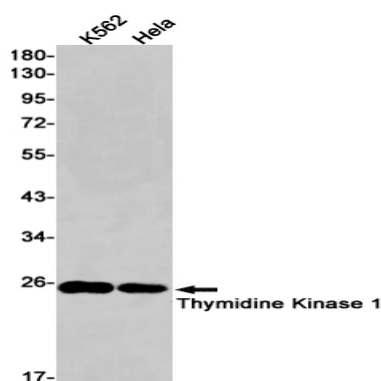


TK is a cytosolic thymidine kinase. Phosphorylated during mitosis. Its enzymatic activity is high in proliferating cells and peaks during the S-phase of the cell cycle; it is very low in resting cells.

## Research Area

Epigenetics and Nuclear Signaling

## Image Data



Western blot analysis of Thymidine Kinase 1 in K562, HeLa lysates using Thymidine Kinase antibody.

## Note

For research use only.