

**Product Name: Thioredoxin 2 Rabbit Monoclonal Antibody**  
**Catalog #: AMRe02686**

---

## Summary

<b>Production Name</b>	Thioredoxin 2 Rabbit Monoclonal Antibody
<b>Description</b>	Rabbit Monoclonal antibody
<b>Host</b>	Rabbit
<b>Application</b>	WB,IHC-F,IHC-P,ICC/IF
<b>Reactivity</b>	Human,Mouse,Rat

## Performance

<b>Conjugation</b>	Unconjugated
<b>Modification</b>	Unmodified
<b>Isotype</b>	IgG
<b>Clonality</b>	Monoclonal
<b>Form</b>	Liquid
<b>Storage</b>	Store at 4°C short term. Aliquot and store at -20°C long term. Avoid freeze/thaw cycles.
<b>Buffer</b>	50mM Tris-Glycine(pH 7.4), 0.15M NaCl, 40% Glycerol, 0.01% Sodium azide and 0.05% BSA
<b>Purification</b>	Affinity Purification

## Immunogen

<b>Gene Name</b>	TXN2
<b>Alternative Names</b>	TXN; MTRX; TRX2; MT-TRX; COXPD29
<b>Gene ID</b>	25828
<b>SwissProt ID</b>	Q99757.

## Application

<b>Dilution Ratio</b>	WB: 1:500-1:1000 IHC: 1:50-1:100 IF: 1:50-1:200
<b>Molecular Weight</b>	Calculated MW: 18 kDa; Observed MW: 13 kDa

**Product Name: Thioredoxin 2 Rabbit Monoclonal Antibody**  
**Catalog #: AMRe02686**



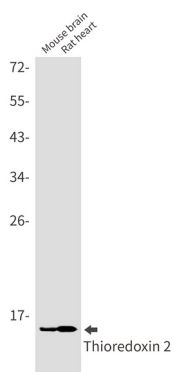
## Background

Thioredoxins (Trx) are small, multi-functional proteins with oxidoreductase activity and are ubiquitous in essentially all living cells. Trx contains a redox-active disulfide/dithiol group within the conserved Cys-Gly-Pro-Cys active site.

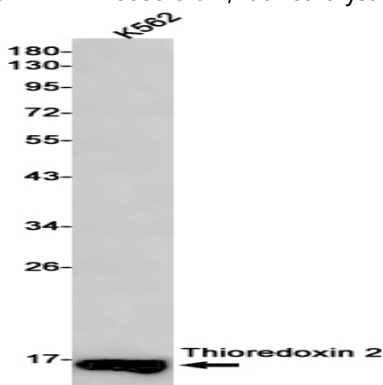
## Research Area

Signal Transduction

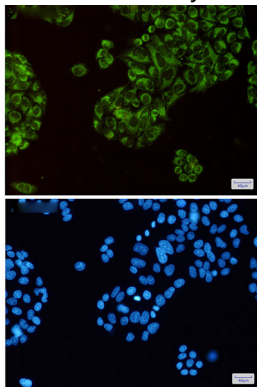
## Image Data



Western blot analysis of Thioredoxin 2 in mouse brain, rat heart lysates using Thioredoxin 2 antibody.



Western blot analysis of Thioredoxin 2 in K562 lysates using Thioredoxin 2 antibody.

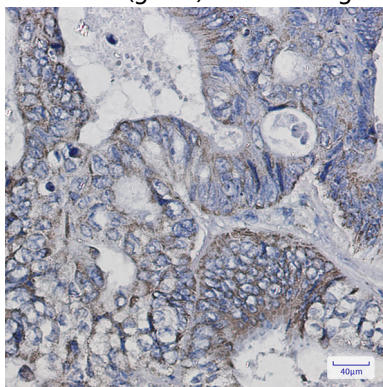


**Product Name: Thioredoxin 2 Rabbit Monoclonal Antibody**  
**Catalog #: AMRe02686**



---

Immunocytochemistry analysis of Thioredoxin 2(green) in Hela using Thioredoxin 2 antibody, and DAPI(blue)



Immunohistochemistry analysis of paraffin-embedded Human colon cancer using Thioredoxin 2 antibody. High-pressure and temperature Sodium Citrate pH 6.0 was used for antigen retrieval.

### **Note**

For research use only.