

**Product Name: Tetranectin Rabbit Monoclonal Antibody**  
**Catalog #: AMRe02683**

---

## Summary

<b>Production Name</b>	Tetranectin Rabbit Monoclonal Antibody
<b>Description</b>	Rabbit Monoclonal antibody
<b>Host</b>	Rabbit
<b>Application</b>	WB,IHC-P,IP
<b>Reactivity</b>	Human,Mouse

## Performance

<b>Conjugation</b>	Unconjugated
<b>Modification</b>	Unmodified
<b>Isotype</b>	IgG
<b>Clonality</b>	Monoclonal
<b>Form</b>	Liquid
<b>Storage</b>	Store at 4°C short term. Aliquot and store at -20°C long term. Avoid freeze/thaw cycles.
<b>Buffer</b>	50mM Tris-Glycine(pH 7.4), 0.15M NaCl, 40% Glycerol, 0.01% Sodium azide and 0.05% BSA
<b>Purification</b>	Affinity Purification

## Immunogen

<b>Gene Name</b>	CLEC3B
<b>Alternative Names</b>	Clec3b; Tetranectin; TN; TNA
<b>Gene ID</b>	7123
<b>SwissProt ID</b>	P05452.

## Application

<b>Dilution Ratio</b>	WB: 1:500-1:1000 IHC: 1:50-1:100 IP: 1:20
<b>Molecular Weight</b>	Calculated MW: 23 kDa; Observed MW: 23 kDa

## Background

---

**Product Name: Tetranectin Rabbit Monoclonal Antibody**  
**Catalog #: AMRe02683**

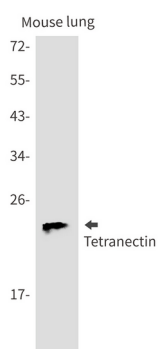


Tetranectin binds to plasminogen and to isolated kringle 4. May be involved in the packaging of molecules destined for exocytosis.

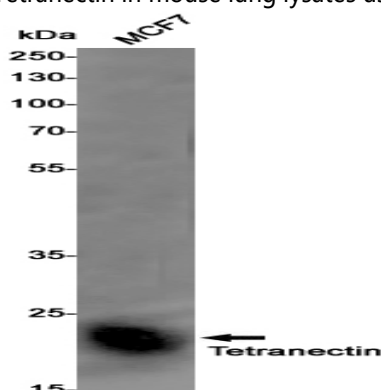
## Research Area

Cardiovascular

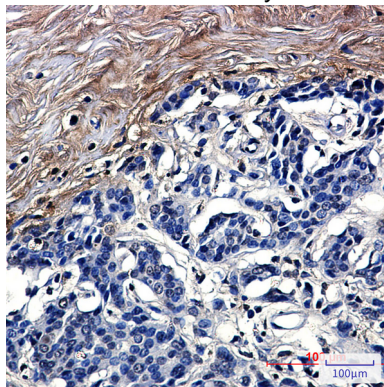
## Image Data



Western blot analysis of Tetranectin in mouse lung lysates using Tetranectin antibody.



Western blot analysis of Tetranectin in MCF-7 lysates using Tetranectin antibody.



Immunohistochemistry analysis of paraffin-embedded Human breast cancer using Tetranectin antibody. High-pressure and temperature Sodium Citrate pH 6.0 was used for antigen retrieval.



**Product Name: Tetranectin Rabbit Monoclonal Antibody**  
**Catalog #: AMRe02683**

---

**Note**

For research use only.