

**Product Name: TDP 43 Rabbit Monoclonal Antibody**  
**Catalog #: AMRe02678**



## Summary

<b>Production Name</b>	TDP 43 Rabbit Monoclonal Antibody
<b>Description</b>	Rabbit Monoclonal antibody
<b>Host</b>	Rabbit
<b>Application</b>	WB,IHC-F,IHC-P,ICC/IF,IP
<b>Reactivity</b>	Human,Mouse,Rat

## Performance

<b>Conjugation</b>	Unconjugated
<b>Modification</b>	Unmodified
<b>Isotype</b>	IgG
<b>Clonality</b>	Monoclonal
<b>Form</b>	Liquid
<b>Storage</b>	Store at 4°C short term. Aliquot and store at -20°C long term. Avoid freeze/thaw cycles.
<b>Buffer</b>	50mM Tris-Glycine(pH 7.4), 0.15M NaCl, 40% Glycerol, 0.01% Sodium azide and 0.05% BSA
<b>Purification</b>	Affinity Purification

## Immunogen

<b>Gene Name</b>	TARDBP
<b>Alternative Names</b>	ALS10; TDP-43
<b>Gene ID</b>	23435
<b>SwissProt ID</b>	Q13148.

## Application

<b>Dilution Ratio</b>	WB: 1:500-1:1000 IHC: 1:50-1:100 IF: 1:50-1:200 IP: 1:20
<b>Molecular Weight</b>	Calculated MW: 45 kDa; Observed MW: 45 kDa

## Background

**Product Name: TDP 43 Rabbit Monoclonal Antibody**  
**Catalog #: AMRe02678**

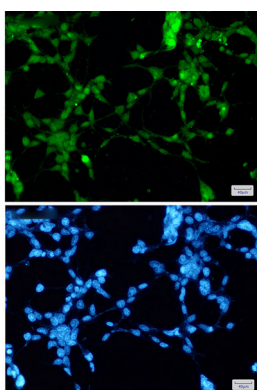


TDP43 (TAR DNA-binding protein 43) is involved in transcriptional regulation and exon splicing. While normal TDP43 is a nuclear protein, pathological TDP43 is a component of insoluble aggregates in patients with frontotemporal lobar degeneration (FTLD) and amyotrophic lateral sclerosis (ALS).

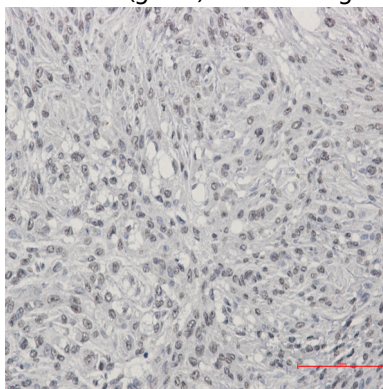
## Research Area

Microbiology

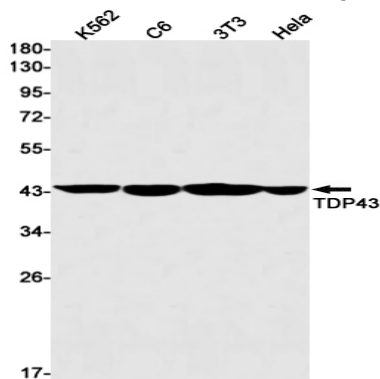
## Image Data



Immunocytochemistry analysis of TDP 43 (green) in 293t using TDP 43 antibody, and DAPI (blue).



Immunohistochemistry analysis of paraffin-embedded Human brain using TDP 43 antibody. High-pressure and temperature Sodium Citrate pH 6.0 was used for antigen retrieval.



**Product Name: TDP 43 Rabbit Monoclonal Antibody**  
**Catalog #: AMRe02678**



---

Western blot analysis of TDP43 in K562, C6, 3T3, Hela lysates using TDP43 antibody

**Note**

For research use only.