

Summary

| | |
|------------------------|----------------------------------|
| Production Name | SMYD3 Rabbit Monoclonal Antibody |
| Description | Rabbit Monoclonal antibody |
| Host | Rabbit |
| Application | WB,IHC-F,IHC-P,ICC/IF,IP |
| Reactivity | Human |

Performance

| | |
|---------------------|--|
| Conjugation | Unconjugated |
| Modification | Unmodified |
| Isotype | IgG |
| Clonality | Monoclonal |
| Form | Liquid |
| Storage | Store at 4°C short term. Aliquot and store at -20°C long term. Avoid freeze/thaw cycles. |
| Buffer | 50mM Tris-Glycine(pH 7.4), 0.15M NaCl, 40% Glycerol, 0.01% Sodium azide and 0.05% BSA |
| Purification | Affinity Purification |

Immunogen

| | |
|--------------------------|-----------------------------------|
| Gene Name | SMYD3 |
| Alternative Names | KMT3E; ZMYND1; ZNFN3A1; bA74P14.1 |
| Gene ID | 64754 |
| SwissProt ID | Q9H7B4. |

Application

| | |
|-------------------------|--|
| Dilution Ratio | WB: 1:500-1:1000 IHC: 1:50-1:100 IF: 1:50-1:200 IP: 1:20 |
| Molecular Weight | Calculated MW: 49 kDa; Observed MW: 49 kDa |

Background

Product Name: SMYD3 Rabbit Monoclonal Antibody
Catalog #: AMRe02617

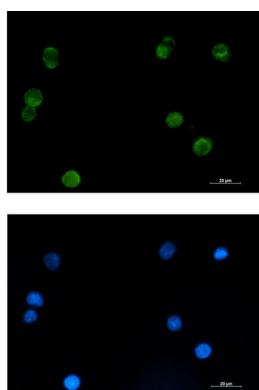


Histone methyltransferase. Specifically methylates 'Lys-4' of histone H3, inducing di- and tri-methylation, but not monomethylation. Plays an important role in transcriptional activation as a member of an RNA polymerase complex. Binds DNA containing 5'-CCCTCC-3' or 5'-GAGGGG-3' sequences.

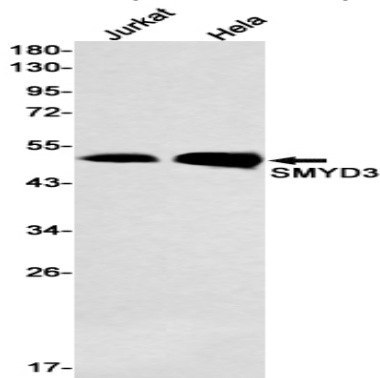
Research Area

Epigenetics and Nuclear Signaling

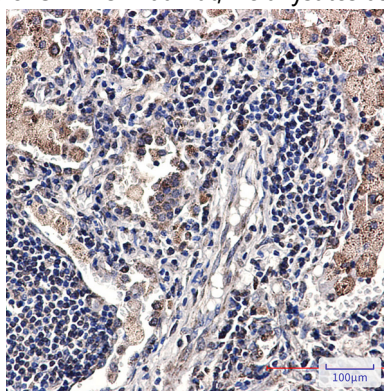
Image Data



Immunocytochemistry analysis of SMYD3 (green) in K562 using SMYD3 antibody, and DAPI (blue).



Western blot analysis of SMYD3 in Jurkat, HeLa lysates using SMYD3 antibody.



Immunohistochemistry analysis of paraffin-embedded Human lung cancer tissue using SMYD3 antibody. High-pressure and

Product Name: SMYD3 Rabbit Monoclonal Antibody
Catalog #: AMRe02617



temperature Sodium Citrate pH 6.0 was used for antigen retrieval.

Note

For research use only.