

Product Name: SFPQ Rabbit Monoclonal Antibody
Catalog #: AMRe02593



Summary

Production Name	SFPQ Rabbit Monoclonal Antibody
Description	Rabbit Monoclonal antibody
Host	Rabbit
Application	WB,IHC-F,IHC-P,ICC/IF
Reactivity	Human,Mouse,Rat

Performance

Conjugation	Unconjugated
Modification	Unmodified
Isotype	IgG
Clonality	Monoclonal
Form	Liquid
Storage	Store at 4°C short term. Aliquot and store at -20°C long term. Avoid freeze/thaw cycles.
Buffer	50mM Tris-Glycine(pH 7.4), 0.15M NaCl, 40% Glycerol, 0.01% Sodium azide and 0.05% BSA
Purification	Affinity Purification

Immunogen

Gene Name	SFPQ
Alternative Names	PSF; POMP100; PPP1R140
Gene ID	6421
SwissProt ID	P23246.

Application

Dilution Ratio	WB: 1:500-1:1000 IHC: 1:50-1:100 IF: 1:50-1:200
Molecular Weight	Calculated MW: 76 kDa; Observed MW: 100 kDa

Background

Product Name: SFPQ Rabbit Monoclonal Antibody
Catalog #: AMRe02593

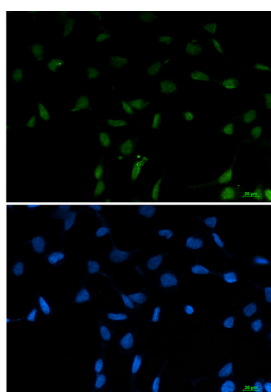


DNA- and RNA binding protein, involved in several nuclear processes. Essential pre-mRNA splicing factor required early in spliceosome formation and for splicing catalytic step II, probably as an heteromer with NONO. Binds to pre-mRNA in spliceosome C complex, and specifically binds to intronic polypyrimidine tracts.

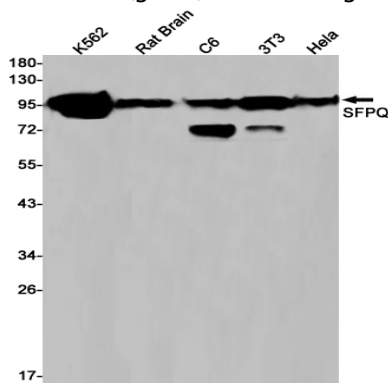
Research Area

Epigenetics and Nuclear Signaling

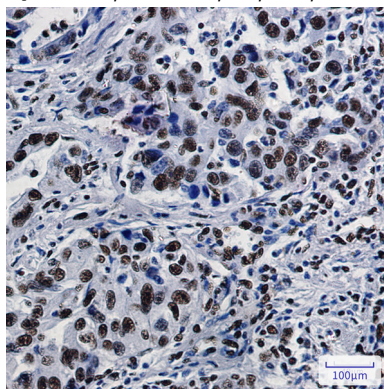
Image Data



Immunocytochemistry analysis of SFPQ (green) in 293T using SFPQ antibody, and DAPI (blue).



Western blot analysis of SFPQ in K562, rat Brain, C6, 3T3, HeLa lysates using SFPQ antibody.



Immunohistochemistry analysis of paraffin-embedded Human lung cancer tissue using SFPQ antibody. High-pressure and

Product Name: SFPQ Rabbit Monoclonal Antibody
Catalog #: AMRe02593



temperature Sodium Citrate pH 6.0 was used for antigen retrieval.

Note

For research use only.