

Product Name: SF2 Rabbit Monoclonal antibody
Catalog #: AMRe02591



Summary

Production Name	SF2 Rabbit Monoclonal antibody
Description	Recombinant Rabbit Monoclonal antibody
Host	Rabbit
Application	WB,IHC-F,IHC-P,ICC/IF
Reactivity	Human,Mouse,Rat

Performance

Conjugation	Unconjugated
Modification	Unmodified
Isotype	IgG
Clonality	Monoclonal Antibody
Form	Liquid
Storage	Store at 4°C short term. Aliquot and store at -20°C long term. Avoid freeze/thaw cycles.
Buffer	50mM Tris-Glycine(pH 7.4), 0.15M NaCl, 40% Glycerol, 0.01% Sodium azide and 0.05% BSA
Purification	Affinity Purified

Immunogen

Gene Name	SRSF1
Alternative Names	ASF; SF2; SFRS1; SF2p33; SRp30a
Gene ID	6426
SwissProt ID	Q07955.

Application

Dilution Ratio	WB: 1:500-1:1000 IHC: 1:50-1:100 IF: 1:50-1:200
Molecular Weight	Calculated MW: 28 kDa; Observed MW: 28 kDa

Background

Product Name: SF2 Rabbit Monoclonal antibody
Catalog #: AMRe02591

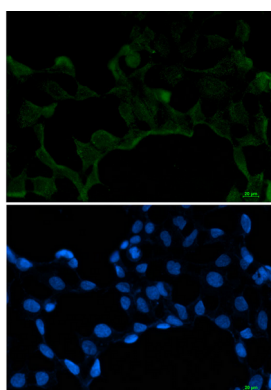


Plays a role in preventing exon skipping, ensuring the accuracy of splicing and regulating alternative splicing. Interacts with other spliceosomal components, via the RS domains, to form a bridge between the 5'- and 3'-splice site binding components, U1 snRNP and U2AF.

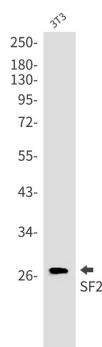
Research Area

Epigenetics and Nuclear Signaling

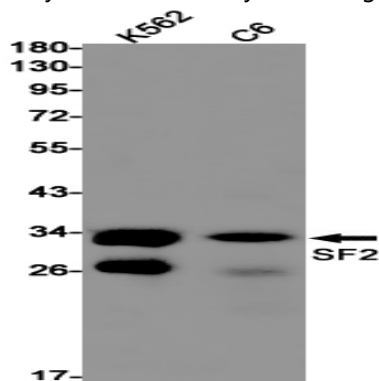
Image Data



Immunocytochemistry analysis of SF2 (green) in 293T using SF2 antibody, and DAPI (blue).

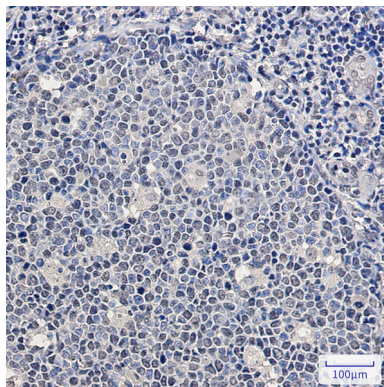


Western blot analysis of SF2 in 3T3 lysates using SF2 antibody.



Western blot analysis of SF2 in K562, C6 lysates using SF2 antibody

Product Name: SF2 Rabbit Monoclonal antibody
Catalog #: AMRe02591



Immunohistochemistry analysis of paraffin-embedded Human tonsil using SF2 antibody. High-pressure and temperature Sodium Citrate pH 6.0 was used for antigen retrieval.

Note

For research use only.