

Product Name: SET Rabbit Monoclonal Antibody
Catalog #: AMRe02590



Summary

Production Name	SET Rabbit Monoclonal Antibody
Description	Rabbit Monoclonal antibody
Host	Rabbit
Application	WB,IHC-F,IHC-P,ICC/IF,IP
Reactivity	Human

Performance

Conjugation	Unconjugated
Modification	Unmodified
Isotype	IgG
Clonality	Monoclonal
Form	Liquid
Storage	Store at 4°C short term. Aliquot and store at -20°C long term. Avoid freeze/thaw cycles.
Buffer	50mM Tris-Glycine(pH 7.4), 0.15M NaCl, 40% Glycerol, 0.01% Sodium azide and 0.05% BSA
Purification	Affinity Purification

Immunogen

Gene Name	SET
Alternative Names	2PP2A; IGAAD; TAF-I; I2PP2A; IPP2A2; PHAPII; TAF-IBETA
Gene ID	6418
SwissProt ID	Q01105.

Application

Dilution Ratio	WB: 1:500-1:1000 IHC: 1:50-1:100 IF: 1:50-1:200 IP: 1:20
Molecular Weight	Calculated MW: 33 kDa; Observed MW: 39 kDa

Background

Product Name: SET Rabbit Monoclonal Antibody
Catalog #: AMRe02590

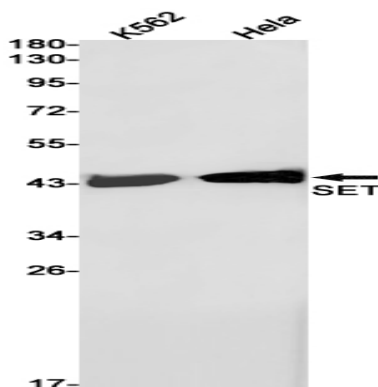


Multitasking protein, involved in apoptosis, transcription, nucleosome assembly and histone binding. Isoform 2 anti-apoptotic activity is mediated by inhibition of the GZMA-activated DNase, NME1.

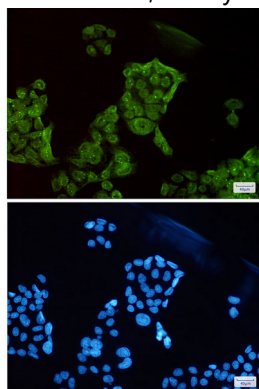
Research Area

Immunology

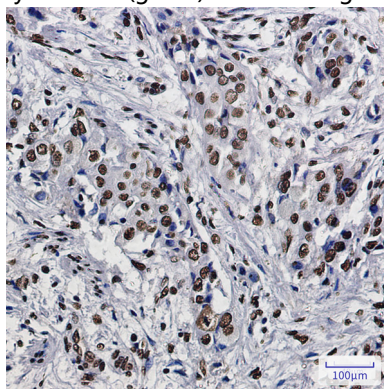
Image Data



Western blot analysis of SET in K562, HeLa lysates using SET antibody.



Immunocytochemistry analysis of SET(green) in HeLa using SET antibody, and DAPI(blue)



Immunohistochemistry analysis of paraffin-embedded Human lung cancer using SET antibody. High-pressure and temperature Sodium Citrate pH 6.0 was used for antigen retrieval.

Product Name: SET Rabbit Monoclonal Antibody
Catalog #: AMRe02590



Note

For research use only.