

**Product Name: Secretory Phospholipase A2 Rabbit
Monoclonal antibody
Catalog #: AMRe02582**

Summary

Production Name	Secretory Phospholipase A2 Rabbit Monoclonal antibody
Description	Recombinant Rabbit Monoclonal antibody
Host	Rabbit
Application	WB
Reactivity	Human,Mouse,Rat

Performance

Conjugation	Unconjugated
Modification	Unmodified
Isotype	IgG
Clonality	Monoclonal Antibody
Form	Liquid
Storage	Store at 4°C short term. Aliquot and store at -20°C long term. Avoid freeze/thaw cycles.
Buffer	50mM Tris-Glycine(pH 7.4), 0.15M NaCl, 40% Glycerol, 0.01% Sodium azide and 0.05% BSA
Purification	Affinity Purified

Immunogen

Gene Name	PLA2G2A
Alternative Names	MOM1; PLA2; PLA2B; PLA2L; PLA2S; PLAS1; sPLA2
Gene ID	5320
SwissProt ID	P14555.

Application

Dilution Ratio	WB: 1:500-1:1000
Molecular Weight	Calculated MW: 16 kDa; Observed MW: 16 kDa

Background

**Product Name: Secretory Phospholipase A2 Rabbit
Monoclonal antibody
Catalog #: AMRe02582**

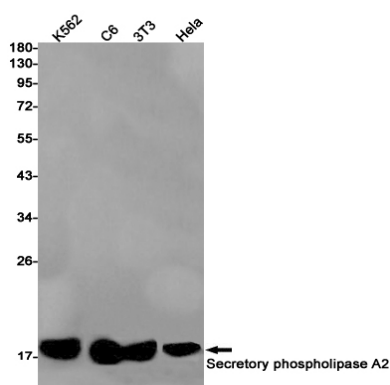


Thought to participate in the regulation of the phospholipid metabolism in biomembranes including eicosanoid biosynthesis. Catalyzes the calcium-dependent hydrolysis of the 2-acyl groups in 3-sn-phosphoglycerides.

Research Area

Signal Transduction

Image Data



Western blot analysis of Secretory Phospho-lipase A2 in K562, C6, 3T3, HeLa lysates using Secretory Phospho-lipase A2 antibody.

Note

For research use only.