

Product Name: SEC61A Rabbit Monoclonal antibody
Catalog #: AMRe02581



Summary

Production Name	SEC61A Rabbit Monoclonal antibody
Description	Recombinant Rabbit Monoclonal antibody
Host	Rabbit
Application	WB,IHC-F,IHC-P,ICC/IF,IP
Reactivity	Human,Mouse,Rat

Performance

Conjugation	Unconjugated
Modification	Unmodified
Isotype	IgG
Clonality	Monoclonal Antibody
Form	Liquid
Storage	Store at 4°C short term. Aliquot and store at -20°C long term. Avoid freeze/thaw cycles.
Buffer	50mM Tris-Glycine(pH 7.4), 0.15M NaCl, 40% Glycerol, 0.01% Sodium azide and 0.05% BSA
Purification	Affinity Purified

Immunogen

Gene Name	SEC61A2
Alternative Names	SEC61A2, Sec61 alpha-2, Protein transport protein Sec61 subunit alpha isoform 2
Gene ID	55176
SwissProt ID	Q9H9S3.

Application

Dilution Ratio	WB: 1:500-1:1000 IHC: 1:50-1:100 IF: 1:50-1:200 IP: 1:20
Molecular Weight	Calculated MW: 52 kDa; Observed MW: 40 kDa

Background

Product Name: SEC61A Rabbit Monoclonal antibody
Catalog #: AMRe02581

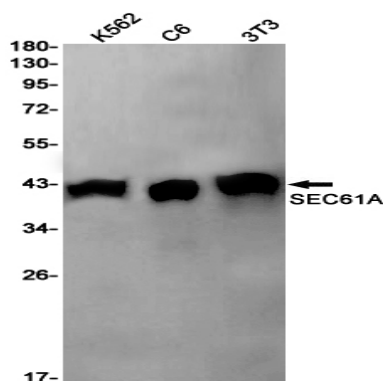


Plays a crucial role in the insertion of secretory and membrane polypeptides into the ER. Required for assembly of membrane and secretory proteins. Tightly associated with membrane-bound ribosomes, either directly or through adapter proteins.

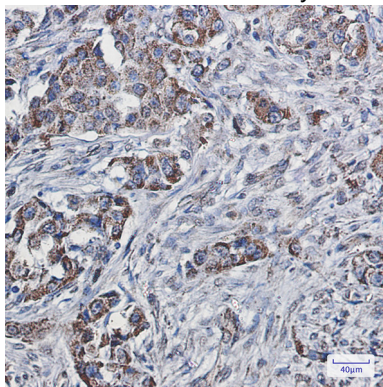
Research Area

Signal Transduction

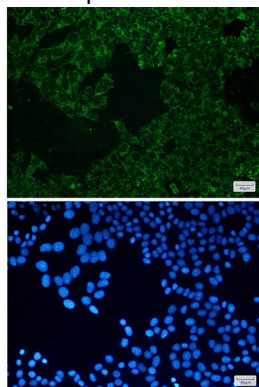
Image Data



Western blot analysis of SEC61A in K562, C6, 3T3 lysates using SEC61A antibody.



Immunohistochemistry analysis of paraffin-embedded Human lung cancer using SEC61A antibody. High-pressure and temperature Sodium Citrate pH 6.0 was used for antigen retrieval.



Product Name: SEC61A Rabbit Monoclonal antibody
Catalog #: AMRe02581



Immunocytochemistry analysis of SEC61A(green) in Hela using SEC61A antibody,and DAPI(blue)

Note

For research use only.