

Product Name: SCD1 Rabbit Monoclonal antibody
Catalog #: AMRe02577



Summary

Production Name	SCD1 Rabbit Monoclonal antibody
Description	Recombinant Rabbit Monoclonal antibody
Host	Rabbit
Application	WB,IHC-F,IHC-P,ICC/IF,IP
Reactivity	Human

Performance

Conjugation	Unconjugated
Modification	Unmodified
Isotype	IgG
Clonality	Monoclonal Antibody
Form	Liquid
Storage	Store at 4°C short term. Aliquot and store at -20°C long term. Avoid freeze/thaw cycles.
Buffer	50mM Tris-Glycine(pH 7.4), 0.15M NaCl, 40% Glycerol, 0.01% Sodium azide and 0.05% BSA
Purification	Affinity Purified

Immunogen

Gene Name	SCD
Alternative Names	SCD1; FADS5; SCDOS; MSTP008
Gene ID	6319
SwissProt ID	O00767.

Application

Dilution Ratio	WB: 1:500-1:1000 IHC: 1:50-1:100 IF: 1:50-1:200 IP: 1:20
Molecular Weight	Calculated MW: 42 kDa; Observed MW: 37 kDa

Background

Product Name: SCD1 Rabbit Monoclonal antibody
Catalog #: AMRe02577

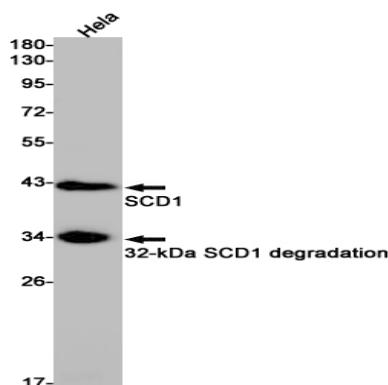


Stearyl-CoA desaturase that utilizes O₂ and electrons from reduced cytochrome b5 to introduce the first double bond into saturated fatty acyl-CoA substrates (PubMed:15907797, PubMed:18765284). Catalyzes the insertion of a cis double bond at the delta-9 position into fatty acyl-CoA substrates including palmitoyl-CoA and stearoyl-CoA (PubMed:15907797, PubMed:18765284). Gives rise to a mixture of 16:1 and 18:1 unsaturated fatty acids (PubMed:15610069). Plays an important role in lipid biosynthesis. Plays an important role in regulating the expression of genes that are involved in lipogenesis and in regulating mitochondrial fatty acid oxidation . Plays an important role in body energy homeostasis . Contributes to the biosynthesis of membrane phospholipids, cholesterol esters and triglycerides .

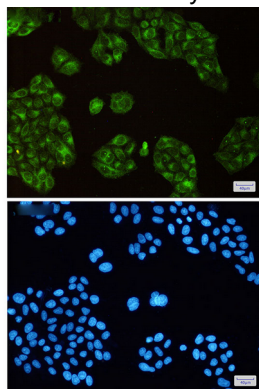
Research Area

Signal Transduction

Image Data

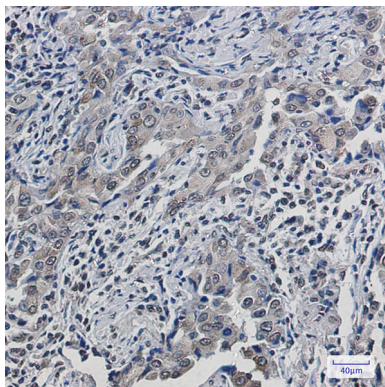


Western blot analysis of SCD1 in HeLa lysates using SCD1 antibody.



Immunocytochemistry analysis of SCD1(green) in HeLa using SCD1 antibody,and DAPI(blue)

Product Name: SCD1 Rabbit Monoclonal antibody
Catalog #: AMRe02577



Immunohistochemistry analysis of paraffin-embedded Human lung cancer using SCD1 antibody. High-pressure and temperature Sodium Citrate pH 6.0 was used for antigen retrieval.

Note

For research use only.