

**Product Name: S100A4 Rabbit Monoclonal Antibody**  
**Catalog #: AMRe02564**



## Summary

<b>Production Name</b>	S100A4 Rabbit Monoclonal Antibody
<b>Description</b>	Rabbit Monoclonal antibody
<b>Host</b>	Rabbit
<b>Application</b>	WB,IHC-F,IHC-P,ICC/IF,IP
<b>Reactivity</b>	Human

## Performance

<b>Conjugation</b>	Unconjugated
<b>Modification</b>	Unmodified
<b>Isotype</b>	IgG
<b>Clonality</b>	Monoclonal
<b>Form</b>	Liquid
<b>Storage</b>	Store at 4°C short term. Aliquot and store at -20°C long term. Avoid freeze/thaw cycles.
<b>Buffer</b>	50mM Tris-Glycine(pH 7.4), 0.15M NaCl, 40% Glycerol, 0.01% Sodium azide and 0.05% BSA
<b>Purification</b>	Affinity Purification

## Immunogen

<b>Gene Name</b>	S100A4 18A2; 42A; calcium Placental protein; Calvasculin; CAPL; Fibroblast specific protein 1; Fibroblast specific protein; FSP1; Leukemia multidrug resistance associated protein; Malignant transformation suppression 1; Metastasin; MTS1; OTTHUMP00000015467;
<b>Alternative Names</b>	OTTHUMP00000015468; P9KA; PEL98; Placental calcium-binding protein; Protein Mts1; Protein S100 A4; Protein S100-A4; S100 calcium binding protein A4 (calcium protein; calvasculin; metastasin; murine placental homolog); S100 calcium binding protein A4; S100 calcium-binding protein A4; S100a4; S10A4_HUMAN.
<b>Gene ID</b>	6275
<b>SwissProt ID</b>	P26447.

## Application

**Product Name: S100A4 Rabbit Monoclonal Antibody**  
**Catalog #: AMRe02564**



**Dilution Ratio** WB: 1:500-1:1000 IHC: 1:50-1:100 IF: 1:50-1:200 IP: 1:20

**Molecular Weight** Calculated MW: 12 kDa; Observed MW: 12 kDa

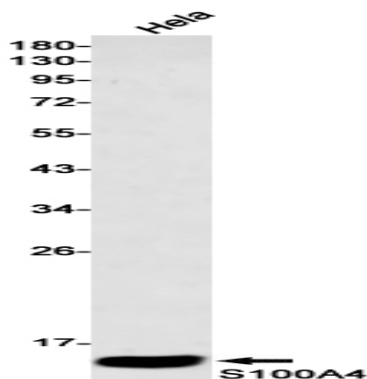
## Background

The protein encoded by this gene is a member of the S100 family of proteins containing 2 EF-hand calcium-binding motifs. This protein may function in motility, invasion, and tubulin polymerization. Chromosomal rearrangements and altered expression of this gene have been implicated in tumor metastasis.

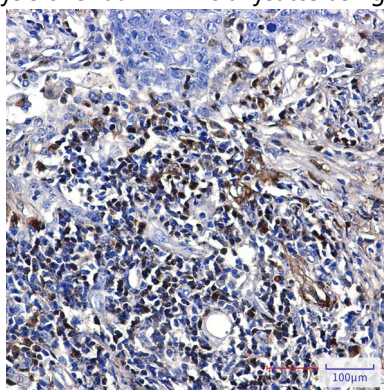
## Research Area

Cardiovascular

## Image Data



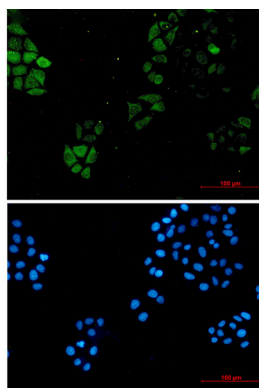
Western blot analysis of S100A4 in HeLa lysates using S100A4 antibody.



Immunohistochemistry analysis of paraffin-embedded Human lung cancer using S100A4 antibody. High-pressure and temperature Sodium Citrate pH 6.0 was used for antigen retrieval.

**Product Name: S100A4 Rabbit Monoclonal Antibody**  
**Catalog #: AMRe02564**

---



Immunocytochemistry analysis of S1A4 (green) in hela using S100A4 antibody, and DAPI(blue)

### **Note**

For research use only.