

**Product Name: Phospho-RSK2 (Ser227) Rabbit  
Monoclonal Antibody  
Catalog #: AMRe02559**

---

## Summary

<b>Production Name</b>	Phospho-RSK2 (Ser227) Rabbit Monoclonal Antibody
<b>Description</b>	Rabbit Monoclonal antibody
<b>Host</b>	Rabbit
<b>Application</b>	WB,IP
<b>Reactivity</b>	Human,Mouse,Rat

## Performance

<b>Conjugation</b>	Unconjugated
<b>Modification</b>	Phosphorylated
<b>Isotype</b>	IgG
<b>Clonality</b>	Monoclonal
<b>Form</b>	Liquid
<b>Storage</b>	Store at 4°C short term. Aliquot and store at -20°C long term. Avoid freeze/thaw cycles.
<b>Buffer</b>	50mM Tris-Glycine(pH 7.4), 0.15M NaCl, 40% Glycerol, 0.01% Sodium azide and 0.05% BSA
<b>Purification</b>	Affinity Purification

## Immunogen

<b>Gene Name</b>	RPS6KA3
<b>Alternative Names</b>	RPS6KA3; ISPK1; MAPKAPK1B; RSK2; Ribosomal protein S6 kinase alpha-3; S6K-alpha-3; 90 kDa ribosomal protein S6 kinase 3; p90-RSK 3; p90RSK3; Insulin-stimulated protein kinase 1; ISPK-1; MAP kinase-activated protein kinase 1b; MAPK-activated
<b>Gene ID</b>	6197
<b>SwissProt ID</b>	P51812.

## Application

<b>Dilution Ratio</b>	WB: 1:500-1:1000 IP: 1:20
<b>Molecular Weight</b>	Calculated MW: 84 kDa; Observed MW: 84 kDa

---

**Product Name: Phospho-RSK2 (Ser227) Rabbit  
Monoclonal Antibody  
Catalog #: AMRe02559**

---



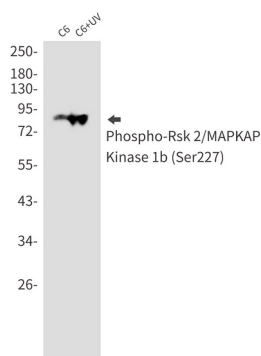
## Background

This gene encodes a member of the RSK (ribosomal S6 kinase) family of serine/threonine kinases. This kinase contains 2 non-identical kinase catalytic domains and phosphorylates various substrates, including members of the mitogen-activated kinase (MAPK) signalling pathway. The activity of this protein has been implicated in controlling cell growth and differentiation. Mutations in this gene have been associated with Coffin-Lowry syndrome (CLS).

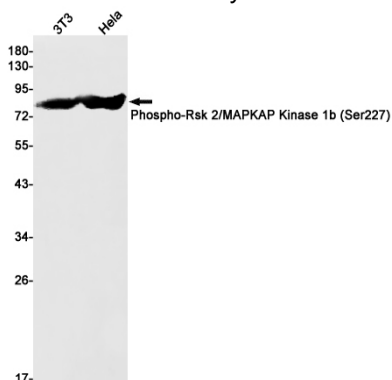
## Research Area

Signal Transduction

## Image Data



Western blot analysis of Phospho-Rsk 2/MAPKAP Kinase 1b (Ser227) in C6, C6+UV lysates using Phospho-RSK2 (Ser227) antibody.



Western blot analysis of Phospho-Rsk 2/MAPKAP Kinase 1b (Ser227) in 3T3, HeLa lysates using Phospho-Rsk 2/MAPKAP Kinase 1b (Ser227) antibody.



**Product Name: Phospho-RSK2 (Ser227) Rabbit  
Monoclonal Antibody  
Catalog #: AMRe02559**

---

**Note**

For research use only.