

**Product Name: RBBP4 Rabbit Monoclonal antibody**  
**Catalog #: AMRe02532**



## Summary

<b>Production Name</b>	RBBP4 Rabbit Monoclonal antibody
<b>Description</b>	Recombinant Rabbit Monoclonal antibody
<b>Host</b>	Rabbit
<b>Application</b>	WB,IHC-F,IHC-P,ICC/IF,IP
<b>Reactivity</b>	Human,Mouse,Rat,Hamster

## Performance

<b>Conjugation</b>	Unconjugated
<b>Modification</b>	Unmodified
<b>Isotype</b>	IgG
<b>Clonality</b>	Monoclonal Antibody
<b>Form</b>	Liquid
<b>Storage</b>	Store at 4°C short term. Aliquot and store at -20°C long term. Avoid freeze/thaw cycles.
<b>Buffer</b>	50mM Tris-Glycine(pH 7.4), 0.15M NaCl, 40% Glycerol, 0.01% Sodium azide and 0.05% BSA
<b>Purification</b>	Affinity Purified

## Immunogen

<b>Gene Name</b>	RBBP4
<b>Alternative Names</b>	NURF55; RBAP48; lin-53
<b>Gene ID</b>	5928
<b>SwissProt ID</b>	Q09028.

## Application

<b>Dilution Ratio</b>	WB: 1:500-1:1000 IHC: 1:50-1:100 IF: 1:50-1:200 IP: 1:20
<b>Molecular Weight</b>	Calculated MW: 48 kDa; Observed MW: 48 kDa

## Background

**Product Name: RBBP4 Rabbit Monoclonal antibody**  
**Catalog #: AMRe02532**

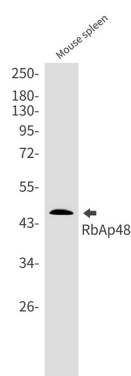


Core histone-binding subunit that may target chromatin assembly factors, chromatin remodeling factors and histone deacetylases to their histone substrates in a manner that is regulated by nucleosomal DNA. Component of several complexes which regulate chromatin metabolism.

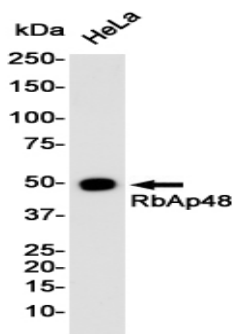
## Research Area

Epigenetics and Nuclear Signaling

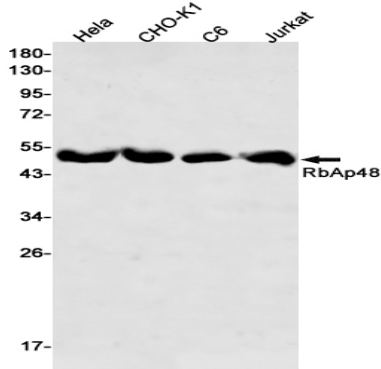
## Image Data



Western blot analysis of RbAp48 in mouse spleen lysates using RBBP4 antibody.

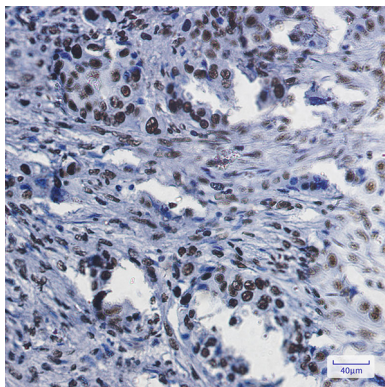


Western blot analysis of RbAp48 in HeLa lysates using RbAp48 antibody.

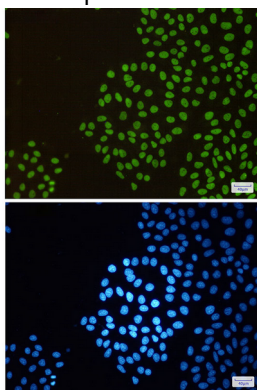


Western blot analysis of RbAp48 in HeLa, CHO-K1, C6, Jurkat lysates using RbAp48 antibody

**Product Name: RBBP4 Rabbit Monoclonal antibody**  
**Catalog #: AMRe02532**



Immunohistochemistry analysis of paraffin-embedded Human lung cancer using RbAp48 antibody. High-pressure and temperature Sodium Citrate pH 6.0 was used for antigen retrieval.



Immunocytochemistry analysis of RbAp48 (green) in Hela using RbAp48 antibody, and DAPI (blue). High-pressure and temperature Sodium Citrate pH 6.0 was used for antigen retrieval.

## **Note**

For research use only.