

**Product Name: Phospho-Raf1 (Ser259) Rabbit Monoclonal antibody**  
**Catalog #: AMRe02515**

---

## Summary

<b>Production Name</b>	Phospho-Raf1 (Ser259) Rabbit Monoclonal antibody
<b>Description</b>	Recombinant Rabbit Monoclonal antibody
<b>Host</b>	Rabbit
<b>Application</b>	WB,IHC-P
<b>Reactivity</b>	Human,Mouse,Rat

## Performance

<b>Conjugation</b>	Unconjugated
<b>Modification</b>	Phosphorylated
<b>Isotype</b>	IgG
<b>Clonality</b>	Monoclonal Antibody
<b>Form</b>	Liquid
<b>Storage</b>	Store at 4°C short term. Aliquot and store at -20°C long term. Avoid freeze/thaw cycles.
<b>Buffer</b>	50mM Tris-Glycine(pH 7.4), 0.15M NaCl, 40% Glycerol, 0.01% Sodium azide and 0.05% BSA
<b>Purification</b>	Affinity Purified

## Immunogen

<b>Gene Name</b>	RAF1
<b>Alternative Names</b>	RAF1; RAF; RAF proto-oncogene serine/threonine-protein kinase; Proto-oncogene c-RAF; cRaf; Raf-1
<b>Gene ID</b>	5894
<b>SwissProt ID</b>	P04049.

## Application

<b>Dilution Ratio</b>	WB: 1:500-1:1000 IHC: 1:50-1:100
<b>Molecular Weight</b>	Calculated MW: 73 kDa; Observed MW: 73 kDa

**Product Name: Phospho-Raf1 (Ser259) Rabbit  
Monoclonal antibody  
Catalog #: AMRe02515**

---

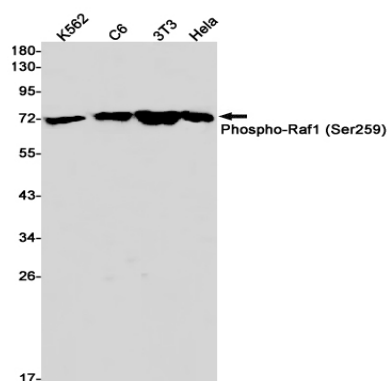
## Background

Raf-1 is a MAP kinase kinase kinase (MAP3K) which functions downstream of the Ras family of membrane associated GTPases to which it binds directly. Once activated Raf-1 can phosphorylate to activate the dual specificity protein kinases MEK1 and MEK2 which in turn phosphorylate to activate the serine/threonine specific protein kinases ERK1 and ERK2.

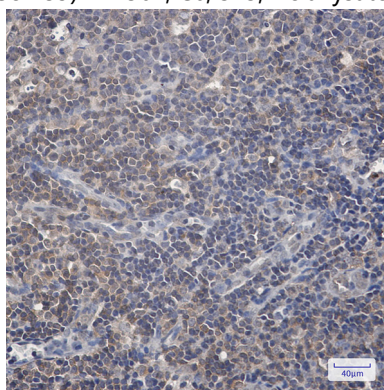
## Research Area

Signal Transduction

## Image Data



Western blot analysis of Phospho-Raf1 (Ser259) in K562, C6, 3T3, HeLa lysates using Phospho-Raf1 (Ser259) antibody.



Immunohistochemistry analysis of paraffin-embedded Human tonsil using Raf1 (Phospho-Ser259) antibody. High-pressure and temperature Sodium Citrate pH 6.0 was used for antigen retrieval.

## Note

For research use only.