

**Product Name: RACK1 Rabbit Monoclonal antibody**  
**Catalog #: AMRe02512**



## Summary

<b>Production Name</b>	RACK1 Rabbit Monoclonal antibody
<b>Description</b>	Recombinant Rabbit Monoclonal antibody
<b>Host</b>	Rabbit
<b>Application</b>	WB,IHC-P
<b>Reactivity</b>	Human,Mouse,Rat

## Performance

<b>Conjugation</b>	Unconjugated
<b>Modification</b>	Unmodified
<b>Isotype</b>	IgG
<b>Clonality</b>	Monoclonal Antibody
<b>Form</b>	Liquid
<b>Storage</b>	Store at 4°C short term. Aliquot and store at -20°C long term. Avoid freeze/thaw cycles.
<b>Buffer</b>	50mM Tris-Glycine(pH 7.4), 0.15M NaCl, 40% Glycerol, 0.01% Sodium azide and 0.05% BSA
<b>Purification</b>	Affinity Purified

## Immunogen

<b>Gene Name</b>	RACK1
<b>Alternative Names</b>	H12.3; HLC-7; PIG21; RACK1; Gnb2-rs1
<b>Gene ID</b>	10399
<b>SwissProt ID</b>	P63244.

## Application

<b>Dilution Ratio</b>	WB: 1:500-1:1000 IHC: 1:50-1:100
<b>Molecular Weight</b>	Calculated MW: 35 kDa; Observed MW: 35 kDa

## Background

**Product Name: RACK1 Rabbit Monoclonal antibody**  
**Catalog #: AMRe02512**

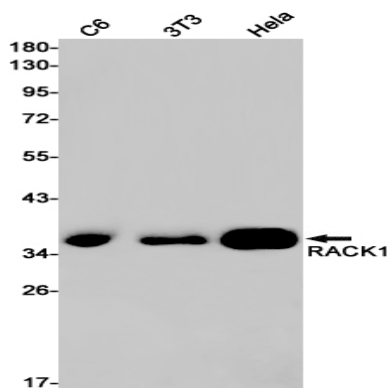


Seems to bind protein kinase C acting as an intracellular receptor to anchor the activated PKC to the cytoskeleton. May be involved in up-regulation of the activity of kinases such as PKC via binding to KRT1.

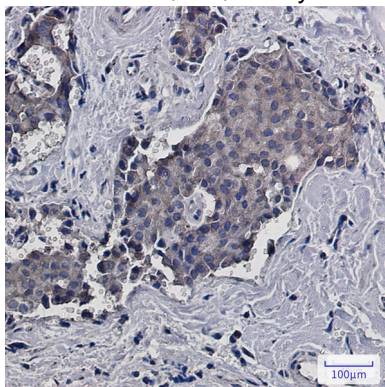
## Research Area

Cell Biology

## Image Data



Western blot analysis of RACK1 in C6, 3T3, HeLa lysates using RACK1 antibody.



Immunohistochemistry analysis of paraffin-embedded Human breast cancer using RACK1 antibody. High-pressure and temperature Sodium Citrate pH 6.0 was used for antigen retrieval.

## Note

For research use only.