

**Product Name: Rab22A Rabbit Monoclonal antibody**  
**Catalog #: AMRe02505**



## Summary

<b>Production Name</b>	Rab22A Rabbit Monoclonal antibody
<b>Description</b>	Recombinant Rabbit Monoclonal antibody
<b>Host</b>	Rabbit
<b>Application</b>	WB,IP
<b>Reactivity</b>	Human,Mouse,Rat

## Performance

<b>Conjugation</b>	Unconjugated
<b>Modification</b>	Unmodified
<b>Isotype</b>	IgG
<b>Clonality</b>	Monoclonal Antibody
<b>Form</b>	Liquid
<b>Storage</b>	Store at 4°C short term. Aliquot and store at -20°C long term. Avoid freeze/thaw cycles.
<b>Buffer</b>	50mM Tris-Glycine(pH 7.4), 0.15M NaCl, 40% Glycerol, 0.01% Sodium azide and 0.05% BSA
<b>Purification</b>	Affinity Purified

## Immunogen

<b>Gene Name</b>	RAB22A
<b>Alternative Names</b>	Ras-related protein Rab-22A
<b>Gene ID</b>	57403
<b>SwissProt ID</b>	Q9UL26.

## Application

<b>Dilution Ratio</b>	WB: 1:500-1:1000 IP: 1:20
<b>Molecular Weight</b>	Calculated MW: 22 kDa; Observed MW: 22 kDa

## Background

Plays a role in endocytosis and intracellular protein transport. Mediates trafficking of TF from early endosomes to recycling

**Product Name: Rab22A Rabbit Monoclonal antibody**  
**Catalog #: AMRe02505**

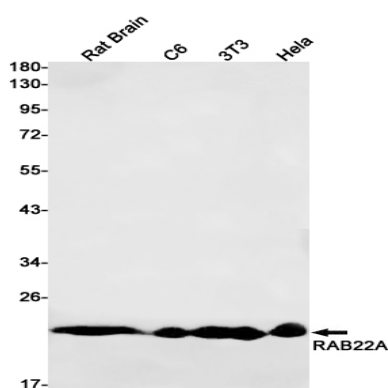


endosomes (PubMed:16537905). Required for NGF-mediated endocytosis of NTRK1, and subsequent neurite outgrowth (PubMed:21849477). Binds GTP and GDP and has low GTPase activity. Alternates between a GTP-bound active form and a GDP-bound inactive form (PubMed:16537905).

## Research Area

Signal Transduction

## Image Data



Western blot analysis of RAB22A in rat Brain, C6, 3T3, HeLa lysates using Rab22A antibody.

## Note

For research use only.