

Product Name: Pyrophosphatase 1 Rabbit Monoclonal antibody
Catalog #: AMRe02502



Summary

Production Name	Pyrophosphatase 1 Rabbit Monoclonal antibody
Description	Recombinant Rabbit Monoclonal antibody
Host	Rabbit
Application	WB,IP
Reactivity	Human,Mouse

Performance

Conjugation	Unconjugated
Modification	Unmodified
Isotype	IgG
Clonality	Monoclonal Antibody
Form	Liquid
Storage	Store at 4°C short term. Aliquot and store at -20°C long term. Avoid freeze/thaw cycles.
Buffer	50mM Tris-Glycine(pH 7.4), 0.15M NaCl, 40% Glycerol, 0.01% Sodium azide and 0.05% BSA
Purification	Affinity Purified

Immunogen

Gene Name	PPA1
Alternative Names	PP; PP1; IOPPP; HEL-S-66p; SID6-8061
Gene ID	5464
SwissProt ID	Q15181.

Application

Dilution Ratio	WB: 1:500-1:1000 IP: 1:20
Molecular Weight	Calculated MW: 33 kDa; Observed MW: 33 kDa

Product Name: Pyrophosphatase 1 Rabbit Monoclonal antibody
Catalog #: AMRe02502



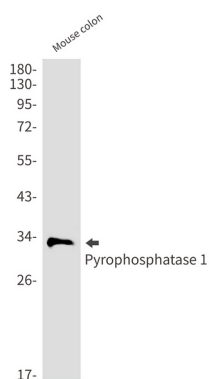
Background

The protein encoded by this gene is a member of the inorganic pyrophosphatase (PPase) family. PPases catalyze the hydrolysis of pyrophosphate to inorganic phosphate, which is important for the phosphate metabolism of cells. Studies of a similar protein in bovine suggested a cytoplasmic localization of this enzyme.

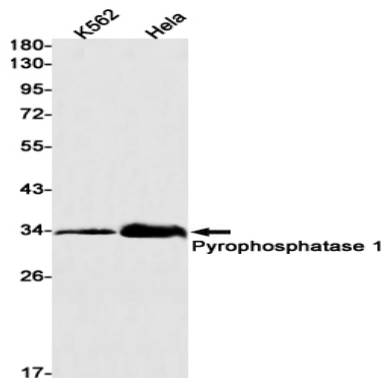
Research Area

Signal Transduction

Image Data



Western blot analysis of Pyrophosphatase 1 in mouse colon lysates using Pyrophosphatase 1 antibody.



Western blot analysis of Pyrophosphatase 1 in K562, HeLa lysates using Pyrophosphatase 1 antibody.

Note

For research use only.