

**Product Name: SPI1 Rabbit Monoclonal Antibody**  
**Catalog #: AMRe02497**



## Summary

<b>Production Name</b>	SPI1 Rabbit Monoclonal Antibody
<b>Description</b>	Rabbit Monoclonal antibody
<b>Host</b>	Rabbit
<b>Application</b>	WB,IHC-P
<b>Reactivity</b>	Human,Mouse

## Performance

<b>Conjugation</b>	Unconjugated
<b>Modification</b>	Unmodified
<b>Isotype</b>	IgG
<b>Clonality</b>	Monoclonal
<b>Form</b>	Liquid
<b>Storage</b>	Store at 4°C short term. Aliquot and store at -20°C long term. Avoid freeze/thaw cycles.
<b>Buffer</b>	50mM Tris-Glycine(pH 7.4), 0.15M NaCl, 40% Glycerol, 0.01% Sodium azide and 0.05% BSA
<b>Purification</b>	Affinity Purification

## Immunogen

<b>Gene Name</b>	SPI1
<b>Alternative Names</b>	SPI1; Transcription factor PU.1; 31 kDa-transforming protein
<b>Gene ID</b>	6688
<b>SwissProt ID</b>	P17947.

## Application

<b>Dilution Ratio</b>	WB: 1:500-1:1000 IHC: 1:50-1:100
<b>Molecular Weight</b>	Calculated MW: 31 kDa; Observed MW: 42 kDa

## Background

Binds to the PU-box, a purine-rich DNA sequence (5'-GAGGAA-3') that can act as a lymphoid-specific enhancer. This

**Product Name: SPI1 Rabbit Monoclonal Antibody**  
**Catalog #: AMRe02497**

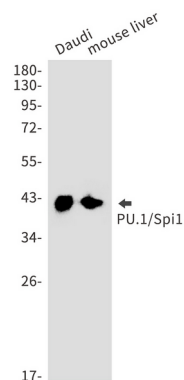


protein is a transcriptional activator that may be specifically involved in the differentiation or activation of macrophages or B-cells. Also binds RNA and may modulate pre-mRNA splicing.

## Research Area

Immunology

## Image Data



Western blot analysis of PU.1/Spi1 in Daudi, mouse liver lysates using SPI1 antibody.

## Note

For research use only.