

Product Name: PSS2 Rabbit Monoclonal Antibody
Catalog #: AMRe02493



Summary

Production Name	PSS2 Rabbit Monoclonal Antibody
Description	Rabbit Monoclonal antibody
Host	Rabbit
Application	WB,IP
Reactivity	Human

Performance

Conjugation	Unconjugated
Modification	Unmodified
Isotype	IgG
Clonality	Monoclonal
Form	Liquid
Storage	Store at 4°C short term. Aliquot and store at -20°C long term. Avoid freeze/thaw cycles.
Buffer	50mM Tris-Glycine(pH 7.4), 0.15M NaCl, 40% Glycerol, 0.01% Sodium azide and 0.05% BSA
Purification	Affinity Purification

Immunogen

Gene Name	PTDSS2
Alternative Names	PSS2
Gene ID	81490
SwissProt ID	Q9BVG9.

Application

Dilution Ratio	WB: 1:500-1:1000 IP: 1:20
Molecular Weight	Calculated MW: 56 kDa; Observed MW: 56 kDa

Background

Catalyzes a base-exchange reaction in which the polar head group of phosphatidylethanolamine (PE) or

Product Name: PSS2 Rabbit Monoclonal Antibody
Catalog #: AMRe02493

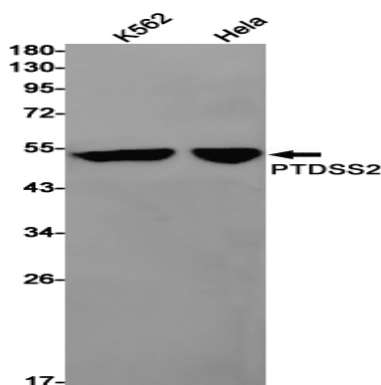


phosphatidylcholine (PC) is replaced by L-serine. PTDSS2 is specific for phosphatidylethanolamine and does not act on phosphatidylcholine.

Research Area

Signal Transduction

Image Data



Western blot analysis of PTDSS2 in K562, HeLa lysates using PSS2 antibody.

Note

For research use only.