

Product Name: PSMA Rabbit Monoclonal Antibody
Catalog #: AMRe02489



Summary

Production Name	PSMA Rabbit Monoclonal Antibody
Description	Rabbit Monoclonal antibody
Host	Rabbit
Application	WB
Reactivity	Human

Performance

Conjugation	Unconjugated
Modification	Unmodified
Isotype	IgG
Clonality	Monoclonal
Form	Liquid
Storage	Store at 4°C short term. Aliquot and store at -20°C long term. Avoid freeze/thaw cycles.
Buffer	50mM Tris-Glycine(pH 7.4), 0.15M NaCl, 40% Glycerol, 0.01% Sodium azide and 0.05% BSA
Purification	Affinity Purification

Immunogen

Gene Name	FOLH1
Alternative Names	FGCP; FOLH 1; GCP 2; GCPII; mGCP; NAALADase I; PSM; PSMA
Gene ID	2346
SwissProt ID	Q04609.

Application

Dilution Ratio	WB: 1:500-1:1000
Molecular Weight	Calculated MW: 84 kDa; Observed MW: 100 kDa

Background

PSMA has both folate hydrolase and N-acetylated-alpha-linked-acidic dipeptidase (NAALADase) activity. Has a preference

Product Name: PSMA Rabbit Monoclonal Antibody
Catalog #: AMRe02489

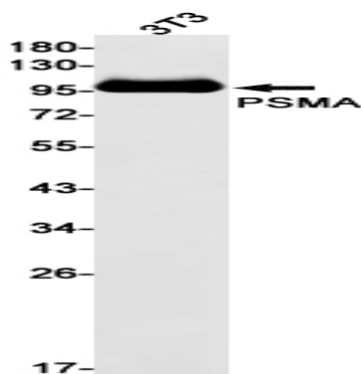


for tri-alpha-glutamate peptides. In the intestine, required for the uptake of folate. In the brain, modulates excitatory neurotransmission through the hydrolysis of the neuropeptide, N-aceylaspartylglutamate (NAAG), thereby releasing glutamate. Isoform PSM-4 and isoform PSM-5 would appear to be physiologically irrelevant. Involved in prostate tumor progression. Also exhibits a dipeptidyl-peptidase IV type activity. In vitro, cleaves Gly-Pro-AMC.

Research Area

Signal Transduction

Image Data



Western blot analysis of PSMA in 3T3 lysates using PSMA antibody.

Note

For research use only.