

Product Name: PP2A alpha/beta Rabbit Monoclonal Antibody
Catalog #: AMRe02461

Summary

Production Name	PP2A alpha/beta Rabbit Monoclonal Antibody
Description	Rabbit Monoclonal antibody
Host	Rabbit
Application	WB,IHC-F,IHC-P,ICC/IF,IP
Reactivity	Human,Mouse,Rat,Hamster

Performance

Conjugation	Unconjugated
Modification	Unmodified
Isotype	IgG
Clonality	Monoclonal
Form	Liquid
Storage	Store at 4°C short term. Aliquot and store at -20°C long term. Avoid freeze/thaw cycles.
Buffer	50mM Tris-Glycine(pH 7.4), 0.15M NaCl, 40% Glycerol, 0.01% Sodium azide and 0.05% BSA
Purification	Affinity Purification

Immunogen

Gene Name	PPP2CA
Alternative Names	PPP2CA; Serine/threonine-protein phosphatase 2A catalytic subunit alpha isoform; PP2A-alpha; Replication protein C; RP-C
Gene ID	5515
SwissProt ID	P67775.

Application

Dilution Ratio	WB: 1:500-1:1000 IHC: 1:50-1:100 IF: 1:50-1:200 IP: 1:20
Molecular Weight	Calculated MW: 36 kDa; Observed MW: 36 kDa

Product Name: PP2A alpha/beta Rabbit Monoclonal Antibody
Catalog #: AMRe02461



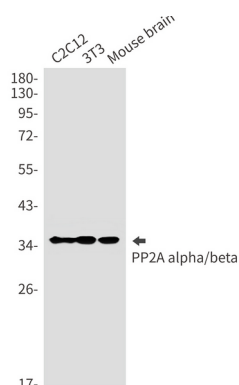
Background

PP2A is the major phosphatase for microtubule-associated proteins (MAPs). PP2A can modulate the activity of phosphorylase B kinase casein kinase 2, mitogen-stimulated S6 kinase, and MAP-2 kinase. Cooperates with SGOL2 to protect centromeric cohesin from separase-mediated cleavage in oocytes specifically during meiosis I (By similarity). Can dephosphorylate SV40 large T antigen and p53/TP53. Activates RAF1 by dephosphorylating it at 'Ser-259'.

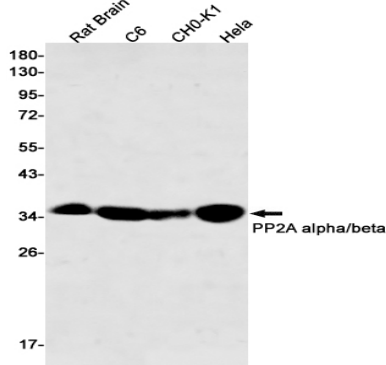
Research Area

Cell Biology

Image Data

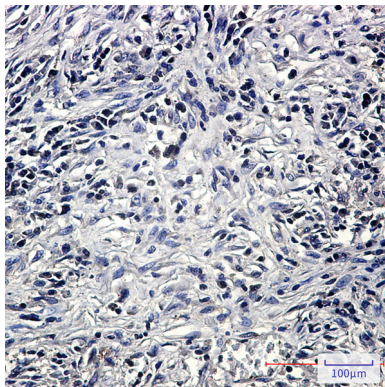


Western blot analysis of PP2A alpha/beta in C2C12, 3T3, mouse brain lysates using PP2A alpha/beta antibody.

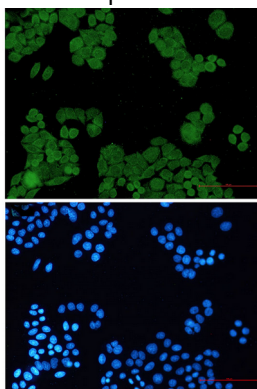


Western blot analysis of PP2A alpha/beta in rat Brain, C6, CHO-K1, HeLa lysates using PP2A alpha/beta antibody.

Product Name: PP2A alpha/beta Rabbit Monoclonal Antibody
Catalog #: AMRe02461



Immunohistochemistry analysis of paraffin-embedded Human lung cancer using PP2A alpha/beta antibody. High-pressure and temperature Sodium Citrate pH 6.0 was used for antigen retrieval.



Immunocytochemistry analysis of PP2A alpha/beta (green) in hela using PP2A alpha/beta antibody, and DAPI (blue).

Note

For research use only.