

## Summary

|                        |                                 |
|------------------------|---------------------------------|
| <b>Production Name</b> | PIN1 Rabbit Monoclonal Antibody |
| <b>Description</b>     | Rabbit Monoclonal antibody      |
| <b>Host</b>            | Rabbit                          |
| <b>Application</b>     | WB,IHC-F,IHC-P,ICC/IF,IP        |
| <b>Reactivity</b>      | Human,Mouse,Rat,Hamster         |

## Performance

|                     |  |
|---------------------|--|
| <b>Conjugation</b>  | Unconjugated   |
| <b>Modification</b> | Unmodified   |
| <b>Isotype</b>      | IgG  |
| <b>Clonality</b>    | Monoclonal   |
| <b>Form</b>         | Liquid   |
| <b>Storage</b>      | Store at 4°C short term. Aliquot and store at -20°C long term. Avoid freeze/thaw cycles. |
| <b>Buffer</b>       | 50mM Tris-Glycine(pH 7.4), 0.15M NaCl, 40% Glycerol, 0.01% Sodium azide and 0.05% BSA    |
| <b>Purification</b> | Affinity Purification  |

## Immunogen

|                          |           |
|--------------------------|-----------|
| <b>Gene Name</b>         | PIN1      |
| <b>Alternative Names</b> | DOD; UBL5 |
| <b>Gene ID</b>           | 5300      |
| <b>SwissProt ID</b>      | Q13526.   |

## Application

|                         |  |
|-------------------------|--|
| <b>Dilution Ratio</b>   | WB: 1:500-1:1000 IHC: 1:50-1:100 IF: 1:50-1:200 IP: 1:20 |
| <b>Molecular Weight</b> | Calculated MW: 18 kDa; Observed MW: 18 kDa               |

## Background

**Product Name: PIN1 Rabbit Monoclonal Antibody**  
**Catalog #: AMRe02442**

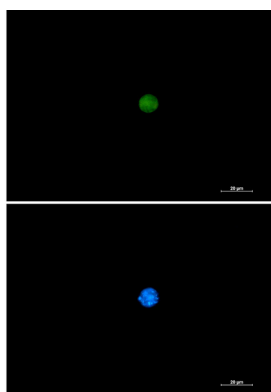


Peptidyl-prolyl cis/trans isomerases (PPlases) catalyze the cis/trans isomerization of peptidyl-prolyl peptide bonds. This gene encodes one of the PPlases, which specifically binds to phosphorylated ser/thr-pro motifs to catalytically regulate the post-phosphorylation conformation of its substrates. The conformational regulation catalyzed by this PPlase has a profound impact on key proteins involved in the regulation of cell growth, genotoxic and other stress responses, the immune response, induction and maintenance of pluripotency, germ cell development, neuronal differentiation, and survival.

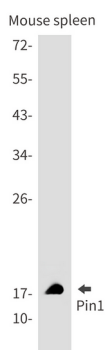
## Research Area

Neuroscience

## Image Data

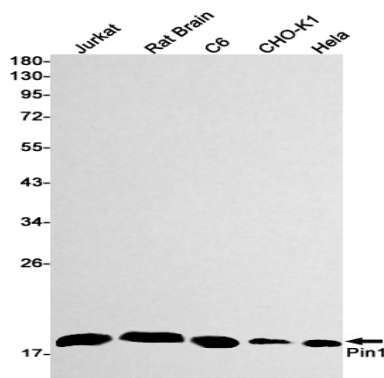


Immunocytochemistry analysis of PIN1 (green) in 293 using PIN1 antibody, and DAPI (blue).

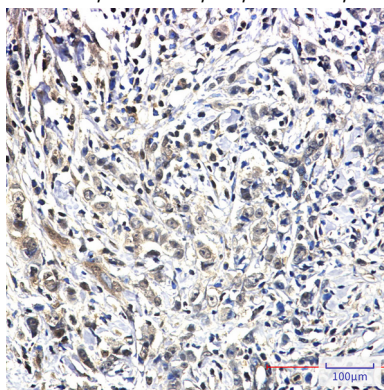


Western blot analysis of Pin1 in mouse spleen lysates using Pin1 antibody.

**Product Name: PIN1 Rabbit Monoclonal Antibody**  
**Catalog #: AMRe02442**



Western blot analysis of Pin1 in Jurkat, rat Brain, C6, CHO-K1, Hela lysates using Pin1 antibody



Immunohistochemistry analysis of paraffin-embedded Human breast cancer using Pin1 antibody. High-pressure and temperature Sodium Citrate pH 6.0 was used for antigen retrieval.

## Note

For research use only.