

**Product Name: PICK1 Rabbit Monoclonal Antibody**  
**Catalog #: AMRe02440**



## Summary

<b>Production Name</b>	PICK1 Rabbit Monoclonal Antibody
<b>Description</b>	Rabbit Monoclonal antibody
<b>Host</b>	Rabbit
<b>Application</b>	WB,IP
<b>Reactivity</b>	Human

## Performance

<b>Conjugation</b>	Unconjugated
<b>Modification</b>	Unmodified
<b>Isotype</b>	IgG
<b>Clonality</b>	Monoclonal
<b>Form</b>	Liquid
<b>Storage</b>	Store at 4°C short term. Aliquot and store at -20°C long term. Avoid freeze/thaw cycles.
<b>Buffer</b>	50mM Tris-Glycine(pH 7.4), 0.15M NaCl, 40% Glycerol, 0.01% Sodium azide and 0.05% BSA
<b>Purification</b>	Affinity Purification

## Immunogen

<b>Gene Name</b>	PICK1
<b>Alternative Names</b>	PICK 1; Pick1; PRKCABP
<b>Gene ID</b>	9463
<b>SwissProt ID</b>	Q9NRD5.

## Application

<b>Dilution Ratio</b>	WB: 1:500-1:1000 IP: 1:20
<b>Molecular Weight</b>	Calculated MW: 47 kDa; Observed MW: 50 kDa

## Background

Probable adapter protein that bind to and organize the subcellular localization of a variety of membrane proteins

**Product Name: PICK1 Rabbit Monoclonal Antibody**  
**Catalog #: AMRe02440**

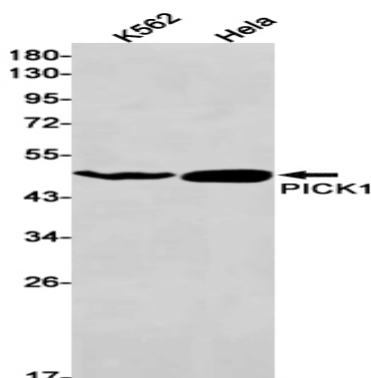


containing some PDZ recognition sequence. Involved in the clustering of various receptors, possibly by acting at the receptor internalization level. Plays a role in synaptic plasticity by regulating the trafficking and internalization of AMPA receptors.

## Research Area

Neuroscience

## Image Data



Western blot analysis of PICK1 in K562, HeLa lysates using PICK1 antibody.

## Note

For research use only.