

**Product Name: PHAPI2 Rabbit Monoclonal antibody**  
**Catalog #: AMRe02433**



## Summary

<b>Production Name</b>	PHAPI2 Rabbit Monoclonal antibody
<b>Description</b>	Recombinant Rabbit Monoclonal antibody
<b>Host</b>	Rabbit
<b>Application</b>	WB,IHC-F,IHC-P,ICC/IF
<b>Reactivity</b>	Human,Rat

## Performance

<b>Conjugation</b>	Unconjugated
<b>Modification</b>	Unmodified
<b>Isotype</b>	IgG
<b>Clonality</b>	Monoclonal Antibody
<b>Form</b>	Liquid
<b>Storage</b>	Store at 4°C short term. Aliquot and store at -20°C long term. Avoid freeze/thaw cycles.
<b>Buffer</b>	50mM Tris-Glycine(pH 7.4), 0.15M NaCl, 40% Glycerol, 0.01% Sodium azide and 0.05% BSA
<b>Purification</b>	Affinity Purified

## Immunogen

<b>Gene Name</b>	ANP32B
<b>Alternative Names</b>	ANP32B; PAL31; PHAPI2; PHAPI2a; Ssp29
<b>Gene ID</b>	10541
<b>SwissProt ID</b>	Q92688.

## Application

<b>Dilution Ratio</b>	WB: 1:500-1:1000 IHC: 1:50-1:100 IF: 1:50-1:200
<b>Molecular Weight</b>	Calculated MW: 29 kDa; Observed MW: 29 kDa

## Background

**Product Name: PHAPI2 Rabbit Monoclonal antibody**  
**Catalog #: AMRe02433**

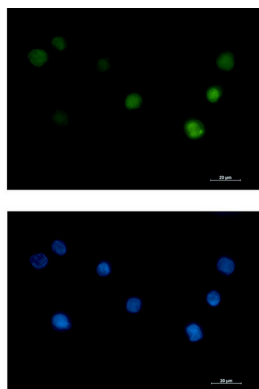


Multifunctional protein working as a cell cycle progression factor as well as a cell survival factor. Required for the progression from the G1 to the S phase.

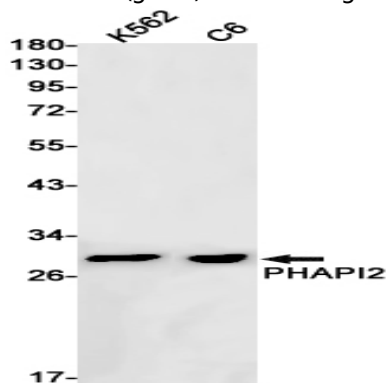
## Research Area

Cell Biology

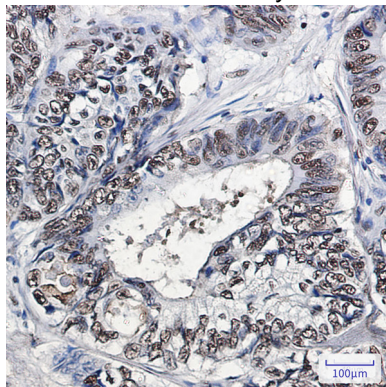
## Image Data



Immunocytochemistry analysis of PHAPI2 (green) in K562 using PHAPI2 antibody, and DAPI (blue).



Western blot analysis of PHAPI2 in K562, C6 lysates using PHAPI2 antibody.



Immunohistochemistry analysis of paraffin-embedded Human colon cancer tissue using PHAPI2/APRIL antibody. High-pressure and temperature Sodium Citrate pH 6.0 was used for antigen retrieval.

**Product Name: PHAPI2 Rabbit Monoclonal antibody**  
**Catalog #: AMRe02433**

---



**Note**

For research use only.