

Summary

| | |
|------------------------|----------------------------------|
| Production Name | PARP1 Rabbit Monoclonal Antibody |
| Description | Rabbit Monoclonal antibody |
| Host | Rabbit |
| Application | WB,IHC-F,IHC-P,ICC/IF |
| Reactivity | Human,Mouse,Rat |

Performance

| | |
|---------------------|------------------------------------------------------------------------------------------|
| Conjugation | Unconjugated |
| Modification | Unmodified |
| Isotype | IgG |
| Clonality | Monoclonal |
| Form | Liquid |
| Storage | Store at 4°C short term. Aliquot and store at -20°C long term. Avoid freeze/thaw cycles. |
| Buffer | 50mM Tris-Glycine(pH 7.4), 0.15M NaCl, 40% Glycerol, 0.01% Sodium azide and 0.05% BSA |
| Purification | Affinity Purification |

Immunogen

| | |
|--------------------------|-------------------------------------------------------------------------------------------------------|
| Gene Name | PARP1 PARP1; ADPRT; PPOL; Poly [ADP-ribose] polymerase 1; PARP-1; ADP-ribosyltransferase |
| Alternative Names | diphtheria toxin-like 1; ARTD1; NAD(+) ADP-ribosyltransferase 1; ADPRT 1; Poly[ADP-ribose] synthase 1 |
| Gene ID | 142 |
| SwissProt ID | P09874. |

Application

| | |
|-------------------------|-------------------------------------------------|
| Dilution Ratio | WB: 1:500-1:1000 IHC: 1:50-1:100 IF: 1:50-1:200 |
| Molecular Weight | Calculated MW: 113 kDa; Observed MW: 116,89 kDa |

Product Name: PARP1 Rabbit Monoclonal Antibody
Catalog #: AMRe02401



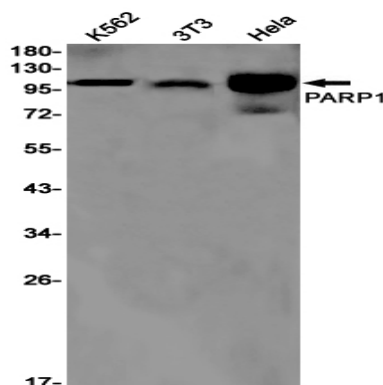
Background

Involved in the base excision repair (BER) pathway, by catalyzing the poly(ADP-ribosyl)ation of a limited number of acceptor proteins involved in chromatin architecture and in DNA metabolism. This modification follows DNA damages and appears as an obligatory step in a detection/signaling pathway leading to the reparation of DNA strand breaks.

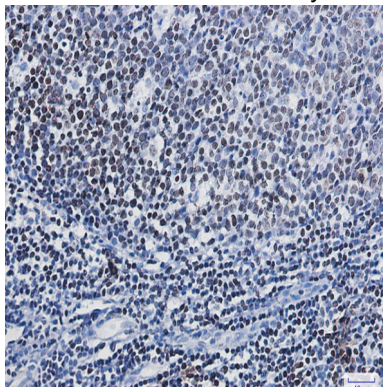
Research Area

Epigenetics and Nuclear Signaling

Image Data

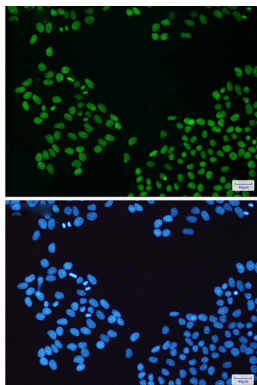


Western blot analysis of PARP1 in K562, 3T3, HeLa lysates using PARP1 antibody.



Immunohistochemistry analysis of paraffin-embedded Human tonsil using PARP1 antibody. High-pressure and temperature Sodium Citrate pH 6.0 was used for antigen retrieval.

Product Name: PARP1 Rabbit Monoclonal Antibody
Catalog #: AMRe02401



Immunocytochemistry analysis of PARP1(green) in HeLa using PARP1 antibody, and DAPI(blue)

Note

For research use only.