

**Product Name: P cadherin Rabbit Monoclonal antibody**  
**Catalog #: AMRe02400**



## Summary

|                        |  |
|------------------------|--|
| <b>Production Name</b> | P cadherin Rabbit Monoclonal antibody  |
| <b>Description</b>     | Recombinant Rabbit Monoclonal antibody |
| <b>Host</b>            | Rabbit                                 |
| <b>Application</b>     | WB,IHC-F,IHC-P,ICC/IF,IP               |
| <b>Reactivity</b>      | Human,Mouse,Rat                        |

## Performance

|                     |  |
|---------------------|--|
| <b>Conjugation</b>  | Unconjugated   |
| <b>Modification</b> | Unmodified   |
| <b>Isotype</b>      | IgG  |
| <b>Clonality</b>    | Monoclonal Antibody  |
| <b>Form</b>         | Liquid   |
| <b>Storage</b>      | Store at 4°C short term. Aliquot and store at -20°C long term. Avoid freeze/thaw cycles. |
| <b>Buffer</b>       | 50mM Tris-Glycine(pH 7.4), 0.15M NaCl, 40% Glycerol, 0.01% Sodium azide and 0.05% BSA    |
| <b>Purification</b> | Affinity Purified  |

## Immunogen

|                          |   |
|--------------------------|---|
| <b>Gene Name</b>         | CDH3  |
| <b>Alternative Names</b> | CDHP; HJMD; PCAD;CDH3 ;Cadherin-3;Placental cadherin (P-cadherin) |
| <b>Gene ID</b>           | 1001  |
| <b>SwissProt ID</b>      | P22223.   |

## Application

|                         |  |
|-------------------------|--|
| <b>Dilution Ratio</b>   | WB: 1:500-1:1000 IHC: 1:50-1:100 IF: 1:50-1:200 IP: 1:20 |
| <b>Molecular Weight</b> | Calculated MW: 97 kDa; Observed MW: 130-150 kDa          |

## Background

**Product Name: P cadherin Rabbit Monoclonal antibody**  
**Catalog #: AMRe02400**

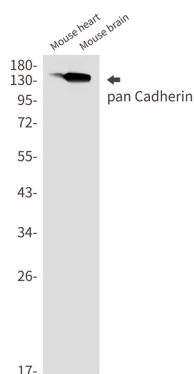


Cadherins are calcium-dependent cell adhesion proteins (PubMed:11976333). They preferentially interact with themselves in a homophilic manner in connecting cells; cadherins may thus contribute to the sorting of heterogeneous cell types. CDH1 is involved in mechanisms regulating cell-cell adhesions, mobility and proliferation of epithelial cells (PubMed:11976333). Has a potent invasive suppressor role. It is a ligand for integrin alpha-E/beta-7.

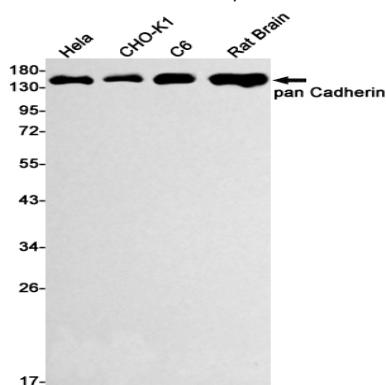
## Research Area

Signal Transduction

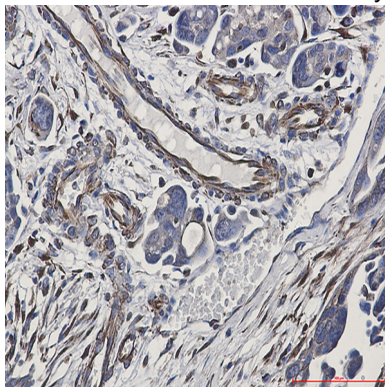
## Image Data



Western blot analysis of pan Cadherin in mouse heart, mouse brain lysates using Cadherin antibody.



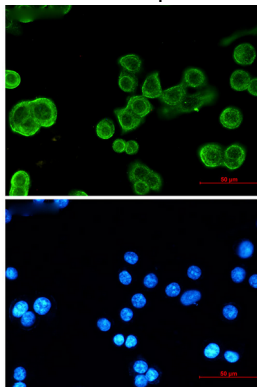
Western blot analysis of pan Cadherin in HeLa, CHO-K1, C6, rat Brain lysates using pan Cadherin antibody.



**Product Name: P cadherin Rabbit Monoclonal antibody**  
**Catalog #: AMRe02400**



Immunohistochemistry analysis of paraffin-embedded Human Cholangiocarcinoma using pan Cadherin antibody. High-pressure and temperature Sodium Citrate pH 6.0 was used for antigen retrieval.



Immunocytochemistry analysis of pan Cadherin (green) in MCF-7 using pan Cadherin antibody, and DAPI(blue).

## **Note**

For research use only.