

**Product Name: Phospho-PAK1/2/3  
(Ser144/Ser141/Ser154) Rabbit Monoclonal Antibody**  
**Catalog #: AMRe02397**

---

## Summary

<b>Production Name</b>	Phospho-PAK1/2/3 (Ser144/Ser141/Ser154) Rabbit Monoclonal Antibody
<b>Description</b>	Rabbit Monoclonal antibody
<b>Host</b>	Rabbit
<b>Application</b>	WB,IHC-F,IHC-P,ICC/IF,IP
<b>Reactivity</b>	Human,Mouse,Rat

## Performance

<b>Conjugation</b>	Unconjugated
<b>Modification</b>	Phosphorylated
<b>Isotype</b>	IgG
<b>Clonality</b>	Monoclonal
<b>Form</b>	Liquid
<b>Storage</b>	Store at 4°C short term. Aliquot and store at -20°C long term. Avoid freeze/thaw cycles.
<b>Buffer</b>	50mM Tris-Glycine(pH 7.4), 0.15M NaCl, 40% Glycerol, 0.01% Sodium azide and 0.05% BSA
<b>Purification</b>	Affinity Purification

## Immunogen

<b>Gene Name</b>	PAK3
<b>Alternative Names</b>	PAK3; OPHN3; Serine/threonine-protein kinase PAK 3; Beta-PAK; Oligophrenin-3; p21-activated kinase 3; PAK-3
<b>Gene ID</b>	5063
<b>SwissProt ID</b>	O75914.

## Application

<b>Dilution Ratio</b>	WB: 1:500-1:1000 IHC: 1:50-1:100 IF: 1:50-1:200 IP: 1:20
<b>Molecular Weight</b>	Calculated MW: 62 kDa; Observed MW: 62 kDa

**Product Name: Phospho-PAK1/2/3  
(Ser144/Ser141/Ser154) Rabbit Monoclonal Antibody  
Catalog #: AMRe02397**

---

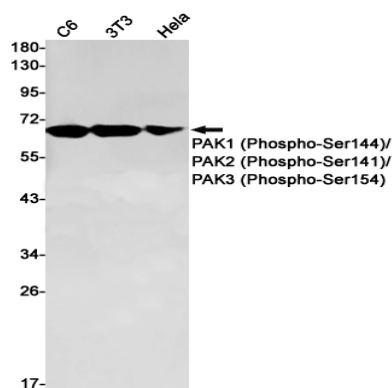
## Background

PAK proteins are critical effectors that link Rho GTPases to cytoskeleton reorganization and nuclear signaling. PAK proteins serve as targets for the small GTP binding proteins Cdc42 and RAC and have been implicated in a wide range of biological activities. PAK3 forms an activated complex with GTP-bound RAS-like (P21), CDC2 and RAC1 proteins which then catalyzes a variety of targets.

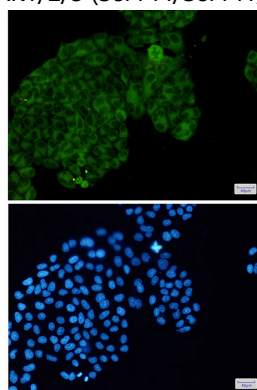
## Research Area

Neuroscience

## Image Data



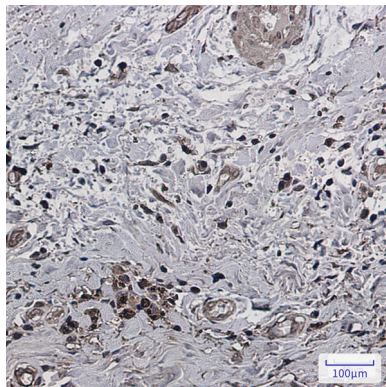
Western blot analysis of PAK1 (Phospho-Ser144)/PAK2 (Phospho-Ser141)/PAK3 (Phospho-Ser154) in C6, 3T3, HeLa lysates using Phospho-PAK1/2/3 (Ser144/Ser141/Ser154) antibody.



Immunocytochemistry analysis of PAK1 (Phospho-Ser144)/PAK2 (Phospho-Ser141)/PAK3 (Phospho-Ser154)(green) in HeLa using PAK1 (Phospho-Ser144)/PAK2 (Phospho-Ser141)/PAK3 (Phospho-Ser154) antibody, and DAPI(blue)

**Product Name: Phospho-PAK1/2/3  
(Ser144/Ser141/Ser154) Rabbit Monoclonal Antibody  
Catalog #: AMRe02397**

---



Immunohistochemistry analysis of paraffin-embedded Human breast cancer using Phospho-PAK1(Ser144)/2(Ser141)/3(Ser154) antibody. High-pressure and temperature Sodium Citrate pH 6.0 was used for antigen retrieval.

### **Note**

For research use only.