

Product Name: PABPN1 Rabbit Monoclonal antibody
Catalog #: AMRe02392



Summary

Production Name	PABPN1 Rabbit Monoclonal antibody
Description	Recombinant Rabbit Monoclonal antibody
Host	Rabbit
Application	WB,IHC-F,IHC-P,ICC/IF,IP
Reactivity	Human,Mouse

Performance

Conjugation	Unconjugated
Modification	Unmodified
Isotype	IgG
Clonality	Monoclonal Antibody
Form	Liquid
Storage	Store at 4°C short term. Aliquot and store at -20°C long term. Avoid freeze/thaw cycles.
Buffer	50mM Tris-Glycine(pH 7.4), 0.15M NaCl, 40% Glycerol, 0.01% Sodium azide and 0.05% BSA
Purification	Affinity Purified

Immunogen

Gene Name	PABPN1
Alternative Names	OPMD; PAB2; PABII; PABP2; PABP-2
Gene ID	8106
SwissProt ID	Q86U42.

Application

Dilution Ratio	WB: 1:500-1:1000 IHC: 1:50-1:100 IF: 1:50-1:200 IP: 1:20
Molecular Weight	Calculated MW: 33 kDa; Observed MW: 50 kDa

Background

Product Name: PABPN1 Rabbit Monoclonal antibody
Catalog #: AMRe02392

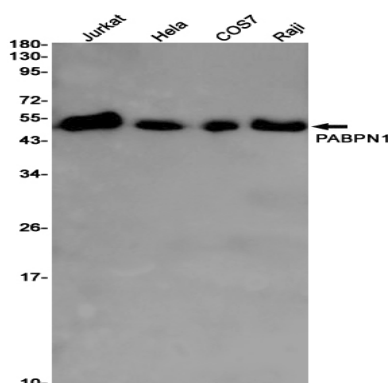


Involved in the 3'-end formation of mRNA precursors (pre-mRNA) by the addition of a poly(A) tail of 200-250 nt to the upstream cleavage product. Stimulates poly(A) polymerase (PAPOLA) conferring processivity on the poly(A) tail elongation reaction and controls also the poly(A) tail length. Increases the affinity of poly(A) polymerase for RNA.

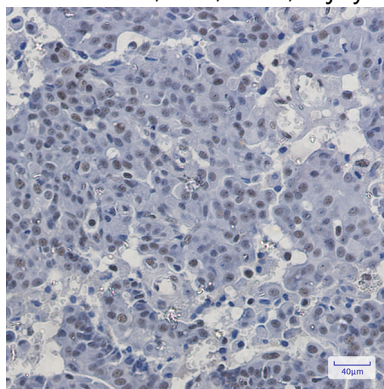
Research Area

Epigenetics and Nuclear Signaling

Image Data



Western blot analysis of PABPN1 in Jurkat, HeLa, COS7, Raji lysates using PABPN1 antibody.



Immunohistochemistry analysis of paraffin-embedded Human breast cancer using PABPN1 antibody. High-pressure and temperature Sodium Citrate pH 6.0 was used for antigen retrieval.

Note

For research use only.