

**Product Name: NF2 Rabbit Monoclonal Antibody**  
**Catalog #: AMRe02338**



## Summary

<b>Production Name</b>	NF2 Rabbit Monoclonal Antibody
<b>Description</b>	Rabbit Monoclonal antibody
<b>Host</b>	Rabbit
<b>Application</b>	WB,IP
<b>Reactivity</b>	Human,Mouse,Rat

## Performance

<b>Conjugation</b>	Unconjugated
<b>Modification</b>	Unmodified
<b>Isotype</b>	IgG
<b>Clonality</b>	Monoclonal
<b>Form</b>	Liquid
<b>Storage</b>	Store at 4°C short term. Aliquot and store at -20°C long term. Avoid freeze/thaw cycles.
<b>Buffer</b>	50mM Tris-Glycine(pH 7.4), 0.15M NaCl, 40% Glycerol, 0.01% Sodium azide and 0.05% BSA
<b>Purification</b>	Affinity Purification

## Immunogen

<b>Gene Name</b>	NF2
<b>Alternative Names</b>	ACN; BANF; Merlin; Moesin ezrin radixin like protein; Neurofibromatosis 2; Neurofibromin 2; Nf2; SCH; Schwannomerlin
<b>Gene ID</b>	4771
<b>SwissProt ID</b>	P35240.

## Application

<b>Dilution Ratio</b>	WB: 1:500-1:1000 IP: 1:20
<b>Molecular Weight</b>	Calculated MW: 70 kDa; Observed MW: 70 kDa

**Product Name: NF2 Rabbit Monoclonal Antibody**  
**Catalog #: AMRe02338**



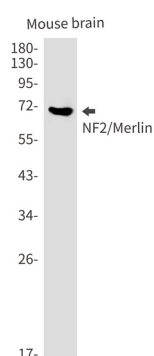
## Background

Probable regulator of the Hippo/SWH (Sav/Wts/Hpo) signaling pathway, a signaling pathway that plays a pivotal role in tumor suppression by restricting proliferation and promoting apoptosis.

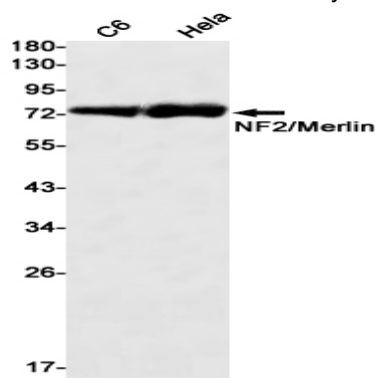
## Research Area

Neuroscience

## Image Data



Western blot analysis of NF2/Merlin in mouse brain lysates using NF2 antibody.



Western blot analysis of NF2/Merlin in C6, HeLa lysates using NF2/Merlin antibody.

## Note

For research use only.