

**Product Name: Neurofilament Heavy Polypeptide Rabbit
Monoclonal Antibody**
Catalog #: AMRe02335

Summary

Production Name	Neurofilament Heavy Polypeptide Rabbit Monoclonal Antibody
Description	Rabbit Monoclonal antibody
Host	Rabbit
Application	WB,IHC-F,IHC-P,ICC/IF
Reactivity	Human,Mouse,Rat

Performance

Conjugation	Unconjugated
Modification	Unmodified
Isotype	IgG
Clonality	Monoclonal
Form	Liquid
Storage	Store at 4°C short term. Aliquot and store at -20°C long term. Avoid freeze/thaw cycles.
Buffer	50mM Tris-Glycine(pH 7.4), 0.15M NaCl, 40% Glycerol, 0.01% Sodium azide and 0.05% BSA
Purification	Affinity Purification

Immunogen

Gene Name	NEFH
Alternative Names	NEFH; KIAA0845; NFH; Neurofilament heavy polypeptide; NF-H; 200 kDa neurofilament protein; Neurofilament triplet H protein
Gene ID	4744
SwissProt ID	P12036.

Application

Dilution Ratio	WB: 1:500-1:1000 IHC: 1:50-1:100 IF: 1:50-1:200
Molecular Weight	Calculated MW: 112 kDa; Observed MW: 180-220 kDa

**Product Name: Neurofilament Heavy Polypeptide Rabbit
Monoclonal Antibody**
Catalog #: AMRe02335

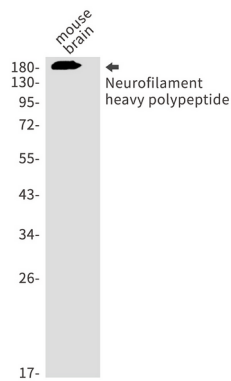
Background

Neurofilaments usually contain three intermediate filament proteins: L, M, and H which are involved in the maintenance of neuronal caliber. NF-H has an important function in mature axons that is not subserved by the two smaller NF proteins.

Research Area

Neuroscience

Image Data



Western blot analysis of Neurofilament heavy polypeptide in mouse brain lysates using Neurofilament Heavy Polypeptide antibody.

Note

For research use only.