

**Product Name: Nesprin1 Rabbit Monoclonal Antibody**  
**Catalog #: AMRe02331**



## Summary

<b>Production Name</b>	Nesprin1 Rabbit Monoclonal Antibody
<b>Description</b>	Rabbit Monoclonal antibody
<b>Host</b>	Rabbit
<b>Application</b>	WB,IHC-F,IHC-P,ICC/IF
<b>Reactivity</b>	Human,Mouse,Rat

## Performance

<b>Conjugation</b>	Unconjugated
<b>Modification</b>	Unmodified
<b>Isotype</b>	IgG
<b>Clonality</b>	Monoclonal
<b>Form</b>	Liquid
<b>Storage</b>	Store at 4°C short term. Aliquot and store at -20°C long term. Avoid freeze/thaw cycles.
<b>Buffer</b>	50mM Tris-Glycine(pH 7.4), 0.15M NaCl, 40% Glycerol, 0.01% Sodium azide and 0.05% BSA
<b>Purification</b>	Affinity Purification

## Immunogen

<b>Gene Name</b>	SYNE1
<b>Alternative Names</b>	ARCA1; C6orf98; CPG2; EDMD4; Enaptin; Myne-1; MYNE1; Nesp1; Nesprin-1; SCAR8; Syne-1; SYNE1
<b>Gene ID</b>	23345
<b>SwissProt ID</b>	Q8NF91.

## Application

<b>Dilution Ratio</b>	WB: 1:500-1:1000 IHC: 1:50-1:100 IF: 1:50-1:200
<b>Molecular Weight</b>	Calculated MW: 1011 kDa; Observed MW: 112 kDa

## Background

**Product Name: Nesprin1 Rabbit Monoclonal Antibody**  
**Catalog #: AMRe02331**

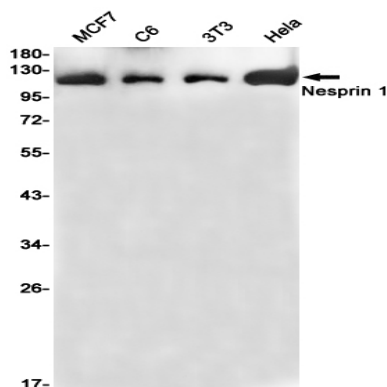


Multi-isomeric modular protein which forms a linking network between organelles and the actin cytoskeleton to maintain the subcellular spatial organization. Component of SUN-protein-containing multivariate complexes also called LINC complexes which link the nucleoskeleton and cytoskeleton by providing versatile outer nuclear membrane attachment sites for cytoskeletal filaments.

## Research Area

Tags & Cell Markers

## Image Data



Western blot analysis of Nesprin 1 in MCF-7, C6, 3T3, HeLa lysates using Nesprin1 antibody.

## Note

For research use only.