

Summary

Production Name	NELFE Rabbit Monoclonal Antibody
Description	Rabbit Monoclonal antibody
Host	Rabbit
Application	WB,IHC-P,IP
Reactivity	Human,Mouse,Rat

Performance

Conjugation	Unconjugated
Modification	Unmodified
Isotype	IgG
Clonality	Monoclonal
Form	Liquid
Storage	Store at 4°C short term. Aliquot and store at -20°C long term. Avoid freeze/thaw cycles.
Buffer	50mM Tris-Glycine(pH 7.4), 0.15M NaCl, 40% Glycerol, 0.01% Sodium azide and 0.05% BSA
Purification	Affinity Purification

Immunogen

Gene Name	NELFE
Alternative Names	RD; RDP; RDBP; D6S45; NELF-E
Gene ID	7936
SwissProt ID	P18615.

Application

Dilution Ratio	WB: 1:500-1:1000 IHC: 1:50-1:100 IP: 1:20
Molecular Weight	Calculated MW: 43 kDa; Observed MW: 43 kDa

Background

Product Name: NELFE Rabbit Monoclonal Antibody
Catalog #: AMRe02330

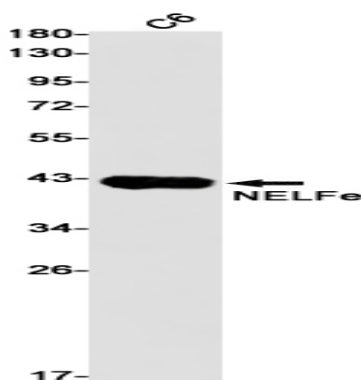


Essential component of the NELF complex, a complex that negatively regulates the elongation of transcription by RNA polymerase II. The NELF complex, which acts via an association with the DSIF complex and causes transcriptional pausing, is counteracted by the P-TEFb kinase complex. The NELF complex is involved in HIV-1 latency possibly involving recruitment of PCF11 to paused RNA polymerase II. Provides the strongest RNA binding activity of the NELF complex and may initially recruit the NELF complex to RNA. Binds to the HIV-1 TAR RNA which is located in the long terminal repeat (LTR) of HIV-1.

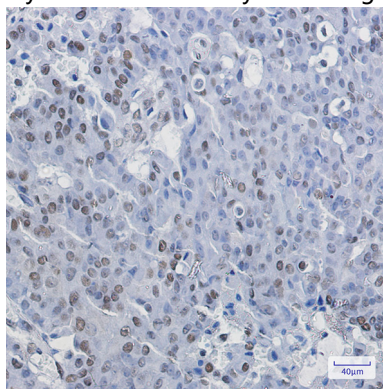
Research Area

Epigenetics and Nuclear Signaling

Image Data



Western blot analysis of NELFe in C6 lysates using NELFE antibody.



Immunohistochemistry analysis of paraffin-embedded Human breast cancer using NELFe antibody. High-pressure and temperature Sodium Citrate pH 6.0 was used for antigen retrieval.

Note

For research use only.