

**Product Name: NDUFS6 Rabbit Monoclonal Antibody**  
**Catalog #: AMRe02324**



## Summary

<b>Production Name</b>	NDUFS6 Rabbit Monoclonal Antibody
<b>Description</b>	Rabbit Monoclonal antibody
<b>Host</b>	Rabbit
<b>Application</b>	WB,IHC-P
<b>Reactivity</b>	Human,Mouse

## Performance

<b>Conjugation</b>	Unconjugated
<b>Modification</b>	Unmodified
<b>Isotype</b>	IgG
<b>Clonality</b>	Monoclonal
<b>Form</b>	Liquid
<b>Storage</b>	Store at 4°C short term. Aliquot and store at -20°C long term. Avoid freeze/thaw cycles.
<b>Buffer</b>	50mM Tris-Glycine(pH 7.4), 0.15M NaCl, 40% Glycerol, 0.01% Sodium azide and 0.05% BSA
<b>Purification</b>	Affinity Purification

## Immunogen

<b>Gene Name</b>	NDUFS6
<b>Alternative Names</b>	CI-13kA; CI13KDA; CI-13kD-A
<b>Gene ID</b>	4726
<b>SwissProt ID</b>	O75380.

## Application

<b>Dilution Ratio</b>	WB: 1:500-1:1000 IHC: 1:50-1:100
<b>Molecular Weight</b>	Calculated MW: 14 kDa; Observed MW: 14 kDa

## Background

**Product Name: NDUFS6 Rabbit Monoclonal Antibody**  
**Catalog #: AMRe02324**

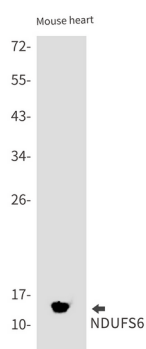


Accessory subunit of the mitochondrial membrane respiratory chain NADH dehydrogenase (Complex I), that is believed not to be involved in catalysis. Complex I functions in the transfer of electrons from NADH to the respiratory chain. The immediate electron acceptor for the enzyme is believed to be ubiquinone.

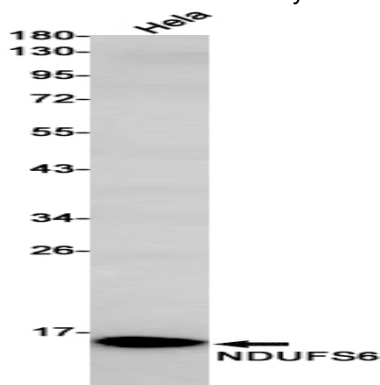
## Research Area

Tags & Cell Markers

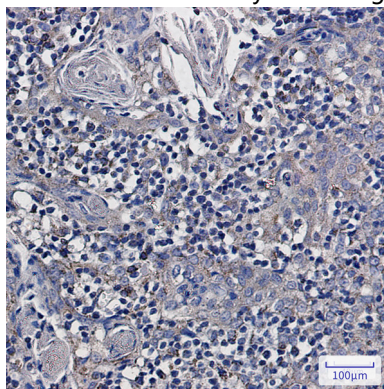
## Image Data



Western blot analysis of NDUFS6 in mouse heart lysates using NDUFS6 antibody.



Western blot analysis of NDUFS6 in Hela lysates using NDUFS6 antibody.



Immunohistochemistry analysis of paraffin-embedded Human tonsil using NDUFS6 antibody. High-pressure and

**Product Name: NDUFS6 Rabbit Monoclonal Antibody**  
**Catalog #: AMRe02324**



---

temperature Sodium Citrate pH 6.0 was used for antigen retrieval.

**Note**

For research use only.