

**Product Name: NDUFB11 Rabbit Monoclonal Antibody**  
**Catalog #: AMRe02317**



## Summary

<b>Production Name</b>	NDUFB11 Rabbit Monoclonal Antibody
<b>Description</b>	Rabbit Monoclonal antibody
<b>Host</b>	Rabbit
<b>Application</b>	WB,IHC-P
<b>Reactivity</b>	Human,Mouse,Rat

## Performance

<b>Conjugation</b>	Unconjugated
<b>Modification</b>	Unmodified
<b>Isotype</b>	IgG
<b>Clonality</b>	Monoclonal
<b>Form</b>	Liquid
<b>Storage</b>	Store at 4°C short term. Aliquot and store at -20°C long term. Avoid freeze/thaw cycles.
<b>Buffer</b>	50mM Tris-Glycine(pH 7.4), 0.15M NaCl, 40% Glycerol, 0.01% Sodium azide and 0.05% BSA
<b>Purification</b>	Affinity Purification

## Immunogen

<b>Gene Name</b>	NDUFB11
<b>Alternative Names</b>	ESSS; Np15; P17.3; NP17.3; CI-ESSS; LSDMCA3
<b>Gene ID</b>	54539
<b>SwissProt ID</b>	Q9NX14.

## Application

<b>Dilution Ratio</b>	WB: 1:500-1:1000 IHC: 1:50-1:100
<b>Molecular Weight</b>	Calculated MW: 17 kDa; Observed MW: 17 kDa

## Background

**Product Name: NDUFB11 Rabbit Monoclonal Antibody**  
**Catalog #: AMRe02317**

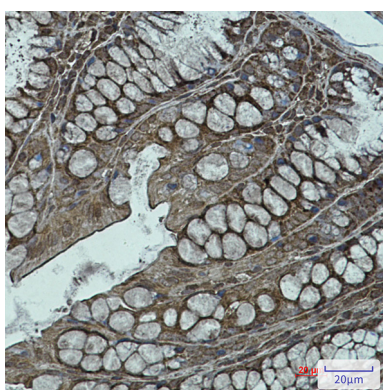


Accessory subunit of the mitochondrial membrane respiratory chain NADH dehydrogenase (Complex I), that is believed not to be involved in catalysis. Complex I functions in the transfer of electrons from NADH to the respiratory chain. The immediate electron acceptor for the enzyme is believed to be ubiquinone.

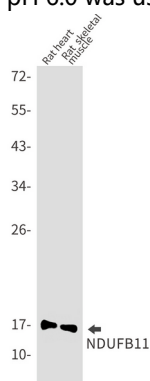
## Research Area

Tags & Cell Markers

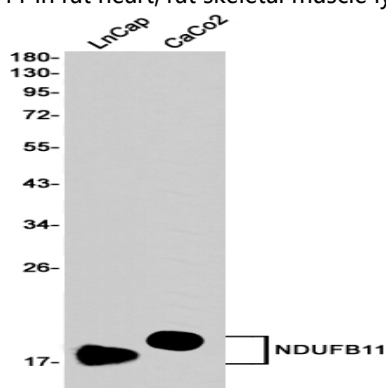
## Image Data



Immunohistochemistry analysis of paraffin-embedded mouse colon using NDUFB11 antibody. High-pressure and temperature Sodium Citrate pH 6.0 was used for antigen retrieval.



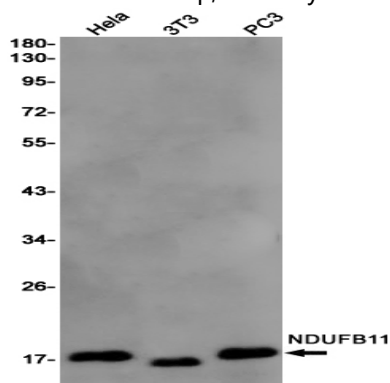
Western blot analysis of NDUFB11 in rat heart, rat skeletal muscle lysates using NDUFB11 antibody.



**Product Name: NDUFB11 Rabbit Monoclonal Antibody**  
**Catalog #: AMRe02317**



Western blot analysis of NDUFB11 in LnCap, CaCo2 lysates using NDUFB11 antibody



Western blot analysis of NDUFB11 in HeLa, 3T3, PC-3 lysates using NDUFB11 antibody.

### **Note**

For research use only.