

**Product Name: NCE2 Rabbit Monoclonal Antibody**  
**Catalog #: AMRe02307**



## Summary

|                        |                                 |
|------------------------|---------------------------------|
| <b>Production Name</b> | NCE2 Rabbit Monoclonal Antibody |
| <b>Description</b>     | Rabbit Monoclonal antibody      |
| <b>Host</b>            | Rabbit                          |
| <b>Application</b>     | WB,IHC-F,IHC-P,ICC/IF           |
| <b>Reactivity</b>      | Human                           |

## Performance

|                     |  |
|---------------------|--|
| <b>Conjugation</b>  | Unconjugated   |
| <b>Modification</b> | Unmodified   |
| <b>Isotype</b>      | IgG  |
| <b>Clonality</b>    | Monoclonal   |
| <b>Form</b>         | Liquid   |
| <b>Storage</b>      | Store at 4°C short term. Aliquot and store at -20°C long term. Avoid freeze/thaw cycles. |
| <b>Buffer</b>       | 50mM Tris-Glycine(pH 7.4), 0.15M NaCl, 40% Glycerol, 0.01% Sodium azide and 0.05% BSA    |
| <b>Purification</b> | Affinity Purification  |

## Immunogen

|                          |   |
|--------------------------|---|
| <b>Gene Name</b>         | UBE2F   |
| <b>Alternative Names</b> | NCE2; NEDD8 carrier protein UBE2F; NEDD8 protein ligase UBE2F; NEDD8-conjugating enzyme 2 |
| <b>Gene ID</b>           | 140739  |
| <b>SwissProt ID</b>      | Q969M7.   |

## Application

|                         |   |
|-------------------------|---|
| <b>Dilution Ratio</b>   | WB: 1:500-1:1000 IHC: 1:50-1:100 IF: 1:50-1:200 |
| <b>Molecular Weight</b> | Calculated MW: 21 kDa; Observed MW: 21 kDa      |

## Background

**Product Name: NCE2 Rabbit Monoclonal Antibody**  
**Catalog #: AMRe02307**

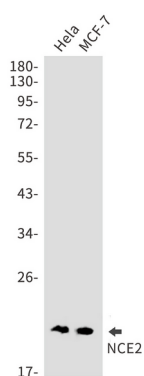


Accepts the ubiquitin-like protein NEDD8 from the UBA3-NAE1 E1 complex and catalyzes its covalent attachment to other proteins. The specific interaction with the E3 ubiquitin ligase RBX2, but not RBX1, suggests that the RBX2-UBE2F complex neddylates specific target proteins, such as CUL5.

## Research Area

Epigenetics and Nuclear Signaling

## Image Data



Western blot analysis of NCE2 in HeLa, MCF-7 lysates using NCE2 antibody.

## Note

For research use only.