

**Product Name: MYL2 Rabbit Monoclonal antibody**  
**Catalog #: AMRe02303**



## Summary

<b>Production Name</b>	MYL2 Rabbit Monoclonal antibody
<b>Description</b>	Recombinant Rabbit Monoclonal antibody
<b>Host</b>	Rabbit
<b>Application</b>	WB,IHC-P,IP
<b>Reactivity</b>	Mouse,Rat

## Performance

<b>Conjugation</b>	Unconjugated
<b>Modification</b>	Unmodified
<b>Isotype</b>	IgG
<b>Clonality</b>	Monoclonal Antibody
<b>Form</b>	Liquid
<b>Storage</b>	Store at 4°C short term. Aliquot and store at -20°C long term. Avoid freeze/thaw cycles.
<b>Buffer</b>	50mM Tris-Glycine(pH 7.4), 0.15M NaCl, 40% Glycerol, 0.01% Sodium azide and 0.05% BSA
<b>Purification</b>	Affinity Purified

## Immunogen

<b>Gene Name</b>	MYL2
<b>Alternative Names</b>	Myosin regulatory light chain 2; ventricular/cardiac muscle isoform; MLC-2; MLC-2v
<b>Gene ID</b>	4633
<b>SwissProt ID</b>	P10916.

## Application

<b>Dilution Ratio</b>	WB: 1:500-1:1000 IHC: 1:50-1:100 IP: 1:20
<b>Molecular Weight</b>	Calculated MW: 19 kDa; Observed MW: 19 kDa

## Background

Myosin is composed of six polypeptide chains: two identical heavy chains and two pairs of light chains. Myosin light chain 2

**Product Name: MYL2 Rabbit Monoclonal antibody**  
**Catalog #: AMRe02303**

---

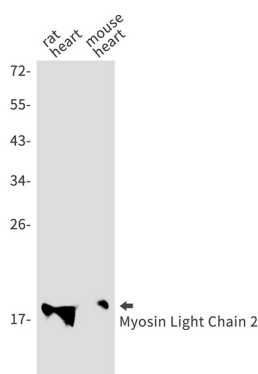


(MLC2), also known as myosin regulatory light chain (MRLC), RLC, or LC20, has many isoforms depending on its distribution. In smooth muscle, MLC2 is phosphorylated at Thr18 and Ser19 by myosin light chain kinase (MLCK) in a Ca<sup>2+</sup>/calmodulin-dependent manner.

## Research Area

Signal Transduction

## Image Data



Western blot analysis of Myosin Light Chain 2 in rat heart, mouse heart lysates using MYL2 antibody.

## Note

For research use only.