

Product Name: MMP12 Rabbit Monoclonal Antibody
Catalog #: AMRe02263



Summary

Production Name	MMP12 Rabbit Monoclonal Antibody
Description	Rabbit Monoclonal antibody
Host	Rabbit
Application	WB,IP
Reactivity	Human,Rat,Hamster

Performance

Conjugation	Unconjugated
Modification	Unmodified
Isotype	IgG
Clonality	Monoclonal
Form	Liquid
Storage	Store at 4°C short term. Aliquot and store at -20°C long term. Avoid freeze/thaw cycles.
Buffer	50mM Tris-Glycine(pH 7.4), 0.15M NaCl, 40% Glycerol, 0.01% Sodium azide and 0.05% BSA
Purification	Affinity Purification

Immunogen

Gene Name	MMP12
Alternative Names	Macrophage metalloelastase; MME; 3.4.24.65; Macrophage elastase; ME; hME; Matrix metalloproteinase-12; MMP-12; MMP12; HME
Gene ID	4321
SwissProt ID	P39900.

Application

Dilution Ratio	WB: 1:500-1:1000 IP: 1:20
Molecular Weight	Calculated MW: 54 kDa; Observed MW: 54,45 kDa

Product Name: MMP12 Rabbit Monoclonal Antibody
Catalog #: AMRe02263



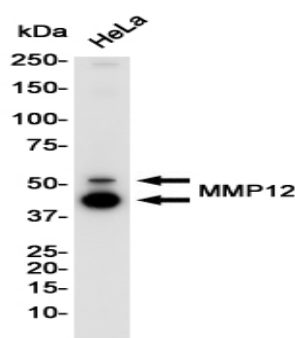
Background

MMP-12 lacks a transmembrane domain and furin cleavage site. The zymogen for MMP-12 is about 54 kDa, and is quickly activated to the 45 kDa form, and this breaks down to cascade of active forms, ending with the common 22 kDa form. Stimulated macrophages produce MMP-12; it has also been found in osteosarcoma cells, synovial fibroblasts and lung fibroblasts.

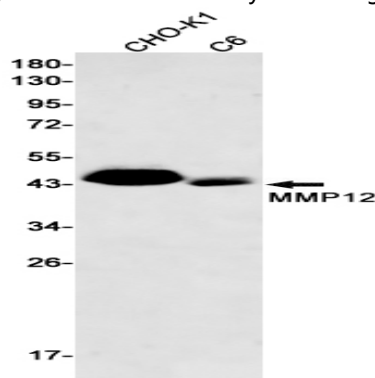
Research Area

Cardiovascular

Image Data



Western blot analysis of MMP12 in HeLa lysates using MMP12 antibody.



Western blot analysis of MMP12 in CHO-K1, C6 lysates using MMP12 antibody.

Note

For research use only.