

Product Name: MLK3 Rabbit Monoclonal antibody
Catalog #: AMRe02262



Summary

Production Name	MLK3 Rabbit Monoclonal antibody
Description	Recombinant Rabbit Monoclonal antibody
Host	Rabbit
Application	WB,ICC/IF
Reactivity	Human

Performance

Conjugation	Unconjugated
Modification	Unmodified
Isotype	IgG
Clonality	Monoclonal Antibody
Form	Liquid
Storage	Store at 4°C short term. Aliquot and store at -20°C long term. Avoid freeze/thaw cycles.
Buffer	50mM Tris-Glycine(pH 7.4), 0.15M NaCl, 40% Glycerol, 0.01% Sodium azide and 0.05% BSA
Purification	Affinity Purified

Immunogen

Gene Name	MAP3K11
Alternative Names	MAP3K11; MLK3; PTK1; SPRK; Mitogen-activated protein kinase kinase kinase 11; Mixed lineage kinase 3; Src-homology 3 domain-containing proline-rich kinase
Gene ID	4296
SwissProt ID	Q16584.

Application

Dilution Ratio	WB: 1:500-1:1000 IF: 1:50-1:200
Molecular Weight	Calculated MW: 93 kDa; Observed MW: 93 kDa

Background

Product Name: MLK3 Rabbit Monoclonal antibody
Catalog #: AMRe02262

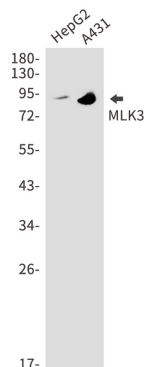


The protein encoded by this gene is a member of the serine/threonine kinase family. This kinase contains a SH3 domain and a leucine zipper-basic motif. This kinase preferentially activates MAPK8/JNK kinase, and functions as a positive regulator of JNK signaling pathway. This kinase can directly phosphorylate, and activates IkappaB kinase alpha and beta, and is found to be involved in the transcription activity of NF-kappaB mediated by Rho family GTPases and CDC42.

Research Area

Signal Transduction

Image Data



Western blot analysis of MLK3 in HepG2, A431 lysates using MLK3 antibody.

Note

For research use only.