

**Product Name: c-Met Rabbit Monoclonal Antibody**  
**Catalog #: AMRe02248**



## Summary

<b>Production Name</b>	c-Met Rabbit Monoclonal Antibody
<b>Description</b>	Rabbit Monoclonal antibody
<b>Host</b>	Rabbit
<b>Application</b>	WB,IHC-F,IHC-P,ICC/IF
<b>Reactivity</b>	Human,Mouse,Rat

## Performance

<b>Conjugation</b>	Unconjugated
<b>Modification</b>	Unmodified
<b>Isotype</b>	IgG
<b>Clonality</b>	Monoclonal
<b>Form</b>	Liquid
<b>Storage</b>	Store at 4°C short term. Aliquot and store at -20°C long term. Avoid freeze/thaw cycles.
<b>Buffer</b>	50mM Tris-Glycine(pH 7.4), 0.15M NaCl, 40% Glycerol, 0.01% Sodium azide and 0.05% BSA
<b>Purification</b>	Affinity Purification

## Immunogen

<b>Gene Name</b>	MET
<b>Alternative Names</b>	MET; Hepatocyte growth factor receptor; HGF receptor; HGF/SF receptor; Proto-oncogene c-Met; Scatter factor receptor; SF receptor; Tyrosine-protein kinase Met
<b>Gene ID</b>	4233
<b>SwissProt ID</b>	P08581.

## Application

<b>Dilution Ratio</b>	WB: 1:500-1:1000 IHC: 1:50-1:100 IF: 1:50-1:200
<b>Molecular Weight</b>	Calculated MW: 156 kDa; Observed MW: 170 kDa

**Product Name: c-Met Rabbit Monoclonal Antibody**  
**Catalog #: AMRe02248**



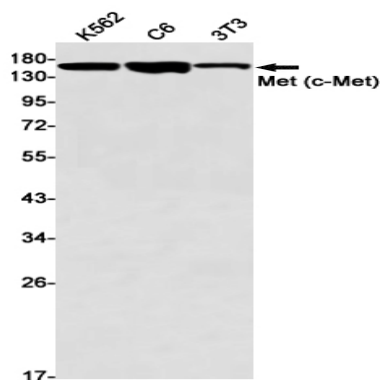
## Background

The proto-oncogene MET product is the hepatocyte growth factor receptor and encodes tyrosine-kinase activity. The primary single chain precursor protein is post-translationally cleaved to produce the alpha and beta subunits, which are disulfide linked to form the mature receptor.

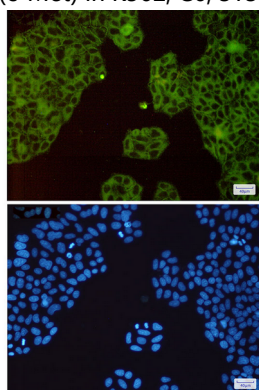
## Research Area

Signal Transduction

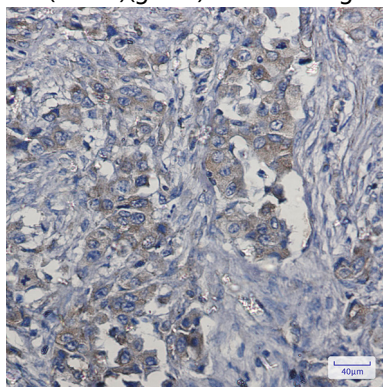
## Image Data



Western blot analysis of Met (c-Met) in K562, C6, 3T3 lysates using c-Met antibody.



Immunocytochemistry analysis of Met (c-Met)(green) in Hela using Met (c-Met) antibody, and DAPI(blue)



**Product Name: c-Met Rabbit Monoclonal Antibody**  
**Catalog #: AMRe02248**



---

Immunohistochemistry analysis of paraffin-embedded Human lung cancer using Met (c-Met) antibody. High-pressure and temperature Sodium Citrate pH 6.0 was used for antigen retrieval.

**Note**

For research use only.