

Product Name: MetRS Rabbit Monoclonal antibody
Catalog #: AMRe02230



Summary

Production Name	MetRS Rabbit Monoclonal antibody
Description	Recombinant Rabbit Monoclonal antibody
Host	Rabbit
Application	WB,IHC-F,IHC-P,ICC/IF,IP
Reactivity	Human,Rat

Performance

Conjugation	Unconjugated
Modification	Unmodified
Isotype	IgG
Clonality	Monoclonal Antibody
Form	Liquid
Storage	Store at 4°C short term. Aliquot and store at -20°C long term. Avoid freeze/thaw cycles.
Buffer	50mM Tris-Glycine(pH 7.4), 0.15M NaCl, 40% Glycerol, 0.01% Sodium azide and 0.05% BSA
Purification	Affinity Purified

Immunogen

Gene Name	MARS1
Alternative Names	MRS; ILLD; CMT2U; ILFS2; METRS; MTRNS; SPG70
Gene ID	4141
SwissProt ID	P56192.

Application

Dilution Ratio	WB: 1:500-1:1000 IHC: 1:50-1:100 IF: 1:50-1:200 IP: 1:20
Molecular Weight	Calculated MW: 101 kDa; Observed MW: 101 kDa

Background

Product Name: MetRS Rabbit Monoclonal antibody
Catalog #: AMRe02230

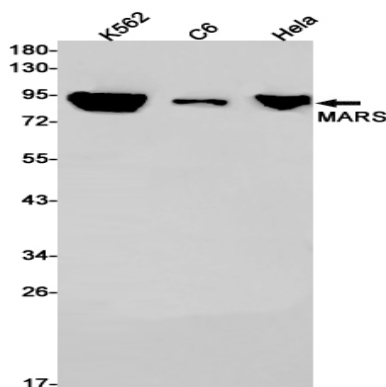


Catalyzes the specific attachment of an amino acid to its cognate tRNA in a 2 step reaction: the amino acid (AA) is first activated by ATP to form AA-AMP and then transferred to the acceptor end of the tRNA.

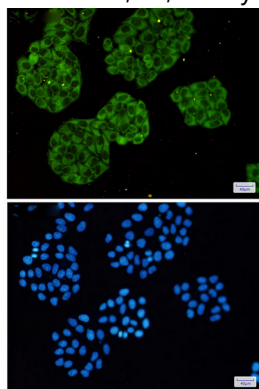
Research Area

Signal Transduction

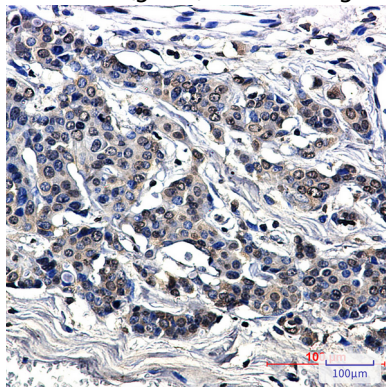
Image Data



Western blot analysis of MARS in K562, C6, HeLa lysates using MetRS antibody.



Immunocytochemistry analysis of MARS(green) in HeLa using MARS antibody, and DAPI(blue)



Immunohistochemistry analysis of paraffin-embedded Human breast cancer using MetRS/MARS antibody. High-pressure and temperature Sodium Citrate pH 6.0 was used for antigen retrieval.

Product Name: MetRS Rabbit Monoclonal antibody
Catalog #: AMRe02230



Note

For research use only.