

## Summary

<b>Production Name</b>	Lumican Rabbit Monoclonal Antibody
<b>Description</b>	Rabbit Monoclonal antibody
<b>Host</b>	Rabbit
<b>Application</b>	WB,IHC-F,IHC-P,ICC/IF
<b>Reactivity</b>	Human,Mouse,Rat

## Performance

<b>Conjugation</b>	Unconjugated
<b>Modification</b>	Unmodified
<b>Isotype</b>	IgG
<b>Clonality</b>	Monoclonal
<b>Form</b>	Liquid
<b>Storage</b>	Store at 4°C short term. Aliquot and store at -20°C long term. Avoid freeze/thaw cycles.
<b>Buffer</b>	50mM Tris-Glycine(pH 7.4), 0.15M NaCl, 40% Glycerol, 0.01% Sodium azide and 0.05% BSA
<b>Purification</b>	Affinity Purification

## Immunogen

<b>Gene Name</b>	LUM
<b>Alternative Names</b>	LDC; LUM; Lumican; SLRR2D
<b>Gene ID</b>	4060
<b>SwissProt ID</b>	P51884.

## Application

<b>Dilution Ratio</b>	WB: 1:500-1:1000 IHC: 1:50-1:100 IF: 1:50-1:200
<b>Molecular Weight</b>	Calculated MW: 38 kDa; Observed MW: 60 kDa

## Background

**Product Name: Lumican Rabbit Monoclonal Antibody**  
**Catalog #: AMRe02222**

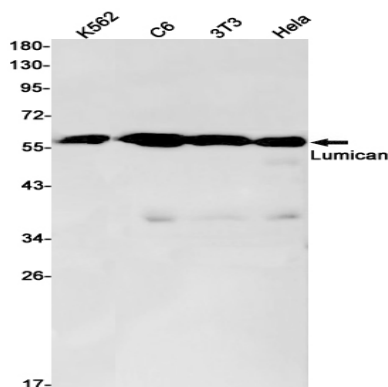


Belongs to the small leucine-rich proteoglycan (SLRP) family. SLRP class II subfamily. Contains 11 LRR (leucine-rich) repeats. Contains 1 LRRNT domain.

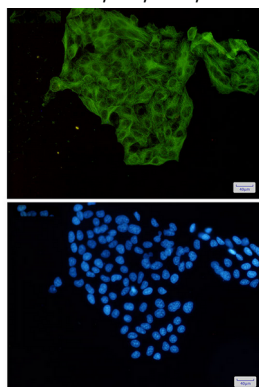
## Research Area

Cancer

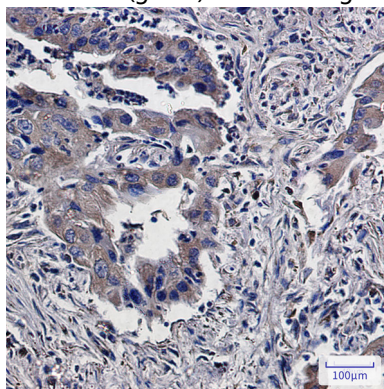
## Image Data



Western blot analysis of Lumican in K562, C6, 3T3, HeLa lysates using Lumican antibody.



Immunocytochemistry analysis of Lumican(green) in HeLa using Lumican antibody, and DAPI(blue)



Immunohistochemistry analysis of paraffin-embedded Human lung cancer using Lumican antibody. High-pressure and temperature Sodium Citrate pH 6.0 was used for antigen retrieval.

**Product Name: Lumican Rabbit Monoclonal Antibody**  
**Catalog #: AMRe02222**

---



**Note**

For research use only.