

**Product Name: Phospho-IGF1 Receptor (Tyr1166) Rabbit  
Monoclonal Antibody**  
**Catalog #: AMRe02162**

---

## Summary

<b>Production Name</b>	Phospho-IGF1 Receptor (Tyr1166) Rabbit Monoclonal Antibody
<b>Description</b>	Rabbit Monoclonal antibody
<b>Host</b>	Rabbit
<b>Application</b>	WB,IP
<b>Reactivity</b>	Human,Mouse,Rat

## Performance

<b>Conjugation</b>	Unconjugated
<b>Modification</b>	Phosphorylated
<b>Isotype</b>	IgG
<b>Clonality</b>	Monoclonal
<b>Form</b>	Liquid
<b>Storage</b>	Store at 4°C short term. Aliquot and store at -20°C long term. Avoid freeze/thaw cycles.
<b>Buffer</b>	50mM Tris-Glycine(pH 7.4), 0.15M NaCl, 40% Glycerol, 0.01% Sodium azide and 0.05% BSA
<b>Purification</b>	Affinity Purification

## Immunogen

<b>Gene Name</b>	IGF1R
<b>Alternative Names</b>	IGF1R; Insulin-like growth factor 1 receptor; Insulin-like growth factor I receptor; IGF-I receptor; CD antigen CD221
<b>Gene ID</b>	3480
<b>SwissProt ID</b>	P08069.

## Application

<b>Dilution Ratio</b>	WB: 1:500-1:1000 IP: 1:20
<b>Molecular Weight</b>	Calculated MW: 155 kDa; Observed MW: 95 kDa

**Product Name: Phospho-IGF1 Receptor (Tyr1166) Rabbit  
Monoclonal Antibody  
Catalog #: AMRe02162**

---

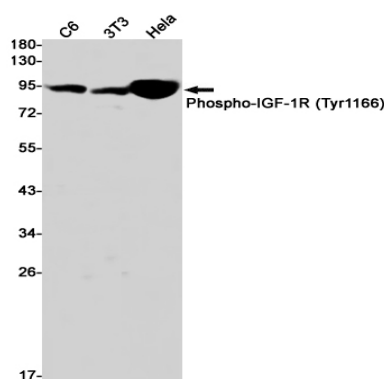
## Background

This receptor binds insulin-like growth factor with a high affinity. It has tyrosine kinase activity. The insulin-like growth factor I receptor plays a critical role in transformation events. Cleavage of the precursor generates alpha and beta subunits. It is highly overexpressed in most malignant tissues where it functions as an anti-apoptotic agent by enhancing cell survival. Alternatively spliced transcript variants encoding distinct isoforms have been found for this gene. [provided by RefSeq, May 2014]

## Research Area

Signal Transduction

## Image Data



Western blot analysis of Phospho-IGF1R (Tyr1166) in C6, 3T3, HeLa lysates using Phospho-IGF1 Receptor (Tyr1166) antibody.

## Note

For research use only.