

Product Name: Hsp90 alpha/beta Rabbit Monoclonal antibody
Catalog #: AMRe02127



Summary

Production Name	Hsp90 alpha/beta Rabbit Monoclonal antibody
Description	Recombinant Rabbit Monoclonal antibody
Host	Rabbit
Application	WB,IHC-F,IHC-P,ICC/IF,IP
Reactivity	Human,Mouse,Rat

Performance

Conjugation	Unconjugated
Modification	Unmodified
Isotype	IgG
Clonality	Monoclonal Antibody
Form	Liquid
Storage	Store at 4°C short term. Aliquot and store at -20°C long term. Avoid freeze/thaw cycles.
Buffer	50mM Tris-Glycine(pH 7.4), 0.15M NaCl, 40% Glycerol, 0.01% Sodium azide and 0.05% BSA
Purification	Affinity Purified

Immunogen

Gene Name	HSP90AA1/HSP90AB1
Alternative Names	HSP90AA1; HSP90A; HSPC1; HSPCA; Heat shock protein HSP 90-alpha; Heat shock 86 kDa; HSP 86; HSP86; Renal carcinoma antigen NY-REN-38; HSP90AB1; HSP90B; HSPC2; HSPCB; Heat shock protein HSP 90-beta; HSP 90; Heat shock 84 kDa; HSP 84; HSP84
Gene ID	3320/3326
SwissProt ID	P07900/P08238.

Application

Dilution Ratio	WB: 1:500-1:1000 IHC: 1:50-1:100 IF: 1:50-1:200 IP: 1:20
Molecular Weight	Calculated MW: 85 kDa; Observed MW: 90 kDa

Product Name: Hsp90 alpha/beta Rabbit Monoclonal antibody
Catalog #: AMRe02127



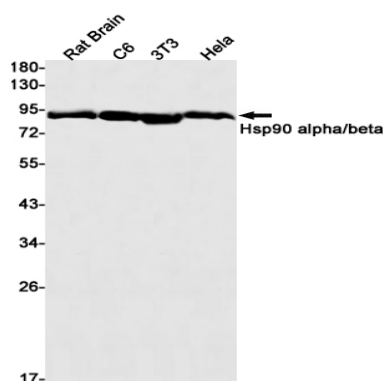
Background

Molecular chaperone that promotes the maturation, structural maintenance and proper regulation of specific target proteins involved for instance in cell cycle control and signal transduction. Undergoes a functional cycle that is linked to its ATPase activity. This cycle probably induces conformational changes in the client proteins, thereby causing their activation.

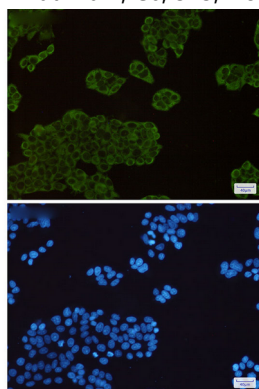
Research Area

Signal Transduction

Image Data

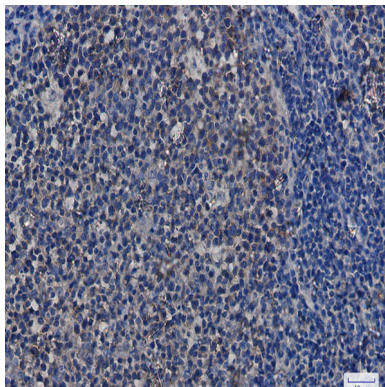


Western blot analysis of Hsp90 alpha/beta in rat Brain, C6, 3T3, HeLa lysates using Hsp90 alpha/beta antibody.



Immunocytochemistry analysis of Hsp90 alpha/beta(green) in HeLa using Hsp90 alpha/beta antibody, and DAPI(blue)

Product Name: Hsp90 alpha/beta Rabbit Monoclonal antibody
Catalog #: AMRe02127



Immunohistochemistry analysis of paraffin-embedded Human tonsil using Hsp90 alpha/beta antibody. High-pressure and temperature Sodium Citrate pH 6.0 was used for antigen retrieval.

Note

For research use only.