

Product Name: HP1 alpha Rabbit Monoclonal Antibody
Catalog #: AMRe02113



Summary

| | |
|------------------------|--------------------------------------|
| Production Name | HP1 alpha Rabbit Monoclonal Antibody |
| Description | Rabbit Monoclonal antibody |
| Host | Rabbit |
| Application | WB,IHC-F,IHC-P,ICC/IF,IP |
| Reactivity | Human,Mouse,Rat |

Performance

| | |
|---------------------|--|
| Conjugation | Unconjugated |
| Modification | Unmodified |
| Isotype | IgG |
| Clonality | Monoclonal |
| Form | Liquid |
| Storage | Store at 4°C short term. Aliquot and store at -20°C long term. Avoid freeze/thaw cycles. |
| Buffer | 50mM Tris-Glycine(pH 7.4), 0.15M NaCl, 40% Glycerol, 0.01% Sodium azide and 0.05% BSA |
| Purification | Affinity Purification |

Immunogen

| | |
|--------------------------|--|
| Gene Name | CBX5 |
| Alternative Names | CBX5; HP1A; Chromobox protein homolog 5; Antigen p25; Heterochromatin protein 1 homolog alpha; HP1 alpha |
| Gene ID | 23468 |
| SwissProt ID | P45973. |

Application

| | |
|-------------------------|--|
| Dilution Ratio | WB: 1:500-1:1000 IHC: 1:50-1:100 IF: 1:50-1:200 IP: 1:20 |
| Molecular Weight | Calculated MW: 22 kDa; Observed MW: 22 kDa |

Product Name: HP1 alpha Rabbit Monoclonal Antibody
Catalog #: AMRe02113



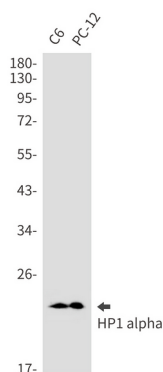
Background

Component of heterochromatin that recognizes and binds histone H3 tails methylated at 'Lys-9' (H3K9me), leading to epigenetic repression. In contrast, it is excluded from chromatin when 'Tyr-41' of histone H3 is phosphorylated (H3Y41ph). Can interact with lamin-B receptor (LBR). This interaction can contribute to the association of the heterochromatin with the inner nuclear membrane. Involved in the formation of functional kinetochore through interaction with MIS12 complex proteins.

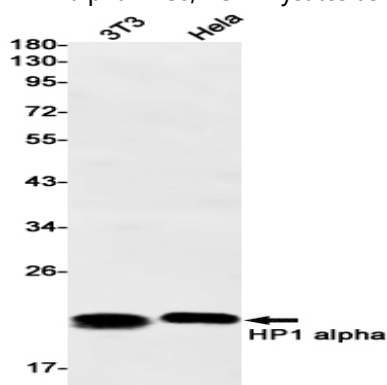
Research Area

Epigenetics and Nuclear Signaling

Image Data

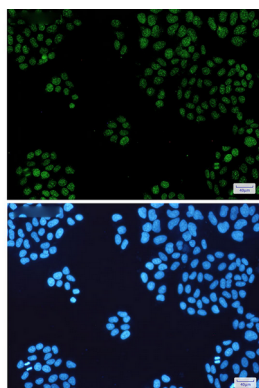


Western blot analysis of HP1 alpha in C6, PC-12 lysates using HP1 alpha antibody.

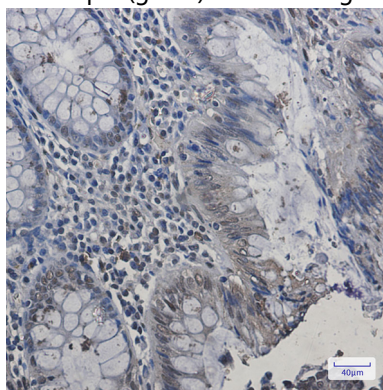


Western blot analysis of HP1 alpha in 3T3, HeLa lysates using HP1 alpha antibody.

Product Name: HP1 alpha Rabbit Monoclonal Antibody
Catalog #: AMRe02113



Immunocytochemistry analysis of HP1 alpha(green) in Hela using HP1 alpha antibody,and DAPI(blue)



Immunohistochemistry analysis of paraffin-embedded Human colon cancer using HP1 alpha antibody.High-pressure and temperature Sodium Citrate pH 6.0 was used for antigen retrieval.

Note

For research use only.