

**Product Name: HADHA Rabbit Monoclonal Antibody**  
**Catalog #: AMRe02068**



## Summary

<b>Production Name</b>	HADHA Rabbit Monoclonal Antibody
<b>Description</b>	Rabbit Monoclonal antibody
<b>Host</b>	Rabbit
<b>Application</b>	WB,IHC-F,IHC-P,ICC/IF,IP
<b>Reactivity</b>	Human,Mouse,Rat

## Performance

<b>Conjugation</b>	Unconjugated
<b>Modification</b>	Unmodified
<b>Isotype</b>	IgG
<b>Clonality</b>	Monoclonal
<b>Form</b>	Liquid
<b>Storage</b>	Store at 4°C short term. Aliquot and store at -20°C long term. Avoid freeze/thaw cycles.
<b>Buffer</b>	50mM Tris-Glycine(pH 7.4), 0.15M NaCl, 40% Glycerol, 0.01% Sodium azide and 0.05% BSA
<b>Purification</b>	Affinity Purification

## Immunogen

<b>Gene Name</b>	HADHA
<b>Alternative Names</b>	GBP; ECHA; HADH; LCEH; MTPA; LCHAD; TP-ALPHA
<b>Gene ID</b>	3030
<b>SwissProt ID</b>	P40939.

## Application

<b>Dilution Ratio</b>	WB: 1:500-1:1000 IHC: 1:50-1:100 IF: 1:50-1:200 IP: 1:20
<b>Molecular Weight</b>	Calculated MW: 83 kDa; Observed MW: 78 kDa

## Background

**Product Name: HADHA Rabbit Monoclonal Antibody**  
**Catalog #: AMRe02068**

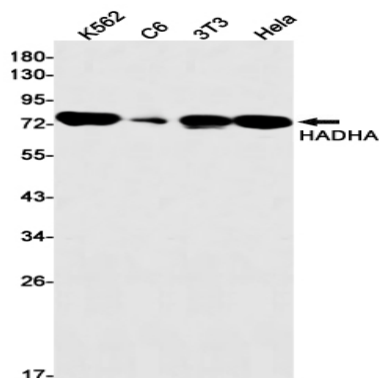


Mitochondrial trifunctional enzyme catalyzes the last three of the four reactions of the mitochondrial beta-oxidation pathway.

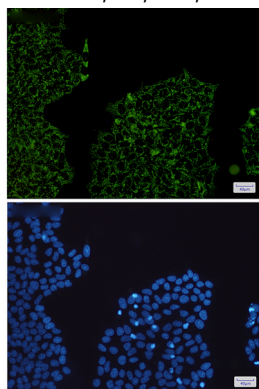
## Research Area

Tags & Cell Markers

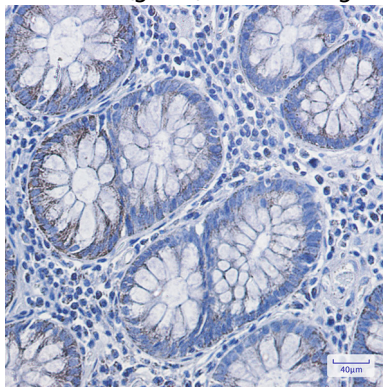
## Image Data



Western blot analysis of HADHA in K562, C6, 3T3, HeLa lysates using HADHA antibody.



Immunocytochemistry analysis of HADHA(green) in HeLa using HADHA antibody, and DAPI(blue)



Immunohistochemistry analysis of paraffin-embedded Human colon cancer using HADHA antibody. High-pressure and temperature Sodium Citrate pH 6.0 was used for antigen retrieval.

**Product Name: HADHA Rabbit Monoclonal Antibody**  
**Catalog #: AMRe02068**

---



**Note**

For research use only.