

**Product Name: GSK3 alpha Rabbit Monoclonal antibody**  
**Catalog #: AMRe02064**



## Summary

<b>Production Name</b>	GSK3 alpha Rabbit Monoclonal antibody
<b>Description</b>	Recombinant Rabbit Monoclonal antibody
<b>Host</b>	Rabbit
<b>Application</b>	WB, ICC/IF, IP
<b>Reactivity</b>	Human, Mouse, Rat

## Performance

<b>Conjugation</b>	Unconjugated
<b>Modification</b>	Unmodified
<b>Isotype</b>	IgG
<b>Clonality</b>	Monoclonal Antibody
<b>Form</b>	Liquid
<b>Storage</b>	Store at 4°C short term. Aliquot and store at -20°C long term. Avoid freeze/thaw cycles.
<b>Buffer</b>	50mM Tris-Glycine(pH 7.4), 0.15M NaCl, 40% Glycerol, 0.01% Sodium azide and 0.05% BSA
<b>Purification</b>	Affinity Purified

## Immunogen

<b>Gene Name</b>	GSK3A
<b>Alternative Names</b>	Serine/threonine-protein kinase GSK3A
<b>Gene ID</b>	2931
<b>SwissProt ID</b>	P49840.

## Application

<b>Dilution Ratio</b>	WB: 1:500-1:1000 IF: 1:50-1:200 IP: 1:20
<b>Molecular Weight</b>	Calculated MW: 51 kDa; Observed MW: 51 kDa

## Background

**Product Name: GSK3 alpha Rabbit Monoclonal antibody**  
**Catalog #: AMRe02064**

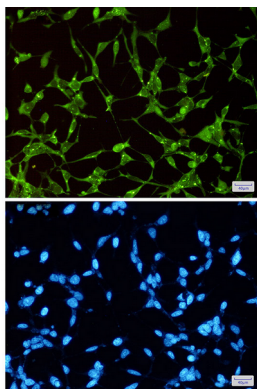


GSK3A a proline-directed protein kinase of the GSK family. Implicated in the control of several regulatory proteins including glycogen synthase, Myb, and c-Jun. GSK3 and GSK3 have similar functions. GSK3 phosphorylates tau, the principal component of neurofibrillary tangles in Alzheimer disease and is required for maximal production of amyloid plaque peptides by secretase.

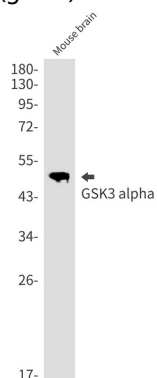
## Research Area

Neuroscience

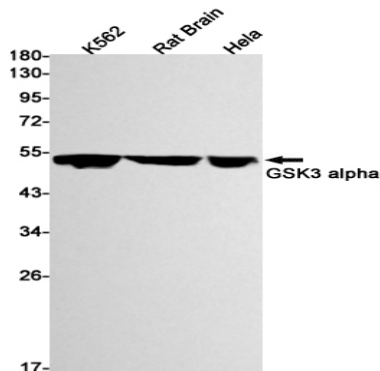
## Image Data



Immunocytochemistry analysis of GSK3 alpha (green) in 293T using GSK3 alpha antibody, and DAPI (blue).



Western blot analysis of GSK3 alpha in mouse brain lysates using GSK3 alpha antibody.



**Product Name: GSK3 alpha Rabbit Monoclonal antibody**  
**Catalog #: AMRe02064**



---

Western blot analysis of GSK3 alpha in K562, rat Brain, Hela lysates using GSK3 alpha antibody

**Note**

For research use only.